

GC Application

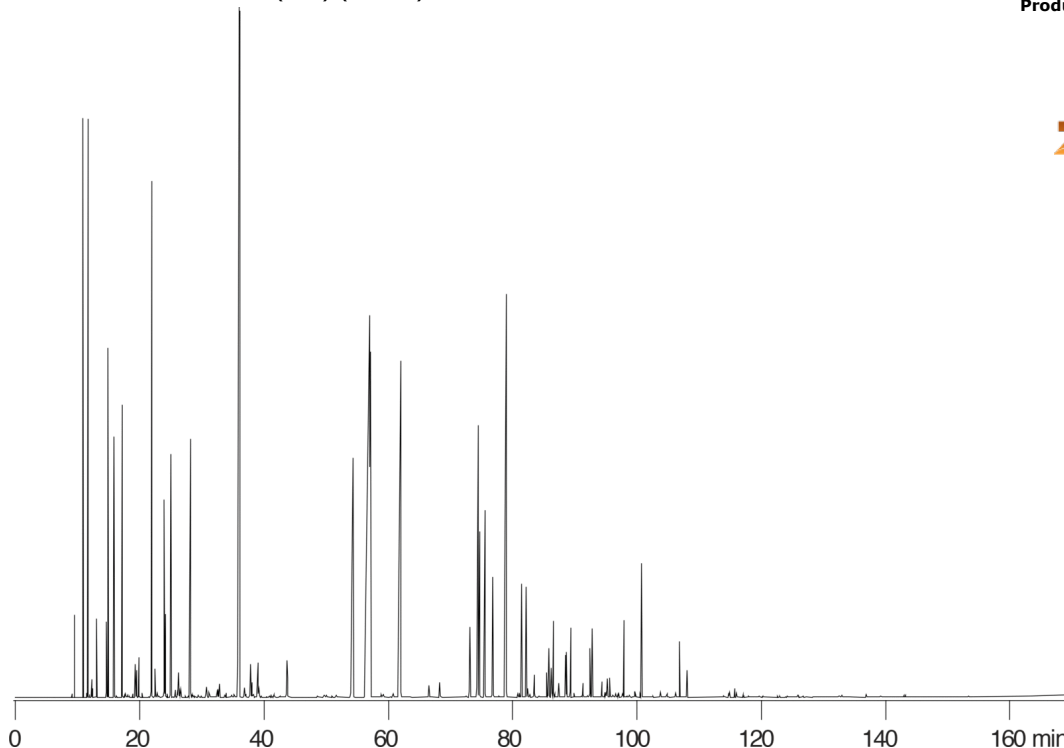
ID No.: 14801

PONA: Blended Fuel 1 on ZB-1

Column: Zebtron[™] ZB-1, GC Cap. Column 100 m x 0.25 mm x 0.50 μm, Ea
Phase: 100% Dimethylpolysiloxane
Dimensions: 100 meters x 0.25 mm x 0.5 μm
Order No: 7MG-G001-17
Oven Profile: 35°C (hold 14 min) to 60°C @ 1.1°C/min (hold 19 min) to 280°C @ 2°C/min (hold 5 min)
Carrier Gas: Constant Flow Helium, 1.55 mL/min
Injection: Split 40:1 0.2 μL @ 220°C
Detection: Flame Ionization (FID) (320°C)



Products used in this application:



PONA: Blended Fuel 1 on ZB-1

ANALYTES:

- 1 Pentane
- 2 2,2-Dimethylpentane
- 3 Methylcyclopentane
- 4 Dimethylpentane
- 5 1-Methyl-1-cyclohexene
- 6 Benzene
- 7 Cyclohexane
- 8 2-Methylhexane
- 9 2,3-Dimethylpentane
- 10 3-Methylhexane
- 11 2,2,4-Trimethylpentane
- 12 Heptane
- 13 2,3,4-Trimethylpentane
- 14 Toluene
- 15 2,2,3-Trimethylpentane
- 16 2,3-Dimethylhexane
- 17 Ethylbenzene
- 18 m-Xylene
- 19 p-Xylene
- 20 o-Xylene
- 21 Decane
- 22 Dodecane

