

# GC Application

ID No.: 14803

## PONA: Retention Markers on ZB-1

**Column:** Zebtron<sup>™</sup> ZB-1, GC Cap. Column 100 m x 0.25 mm x 0.50 µm, Ea

**Phase:** 100% Dimethylpolysiloxane

**Dimensions:** 100 meters x 0.25 mm x 0.5 µm

**Order No:** 7MG-G001-17

**Oven Profile:** 35°C (hold 14 min) to 60°C @ 1.1°C/min (hold 19 min) to 280°C @ 2°C/min (hold 5 min)

**Carrier Gas:** Constant Flow Helium, 1.55 mL/min

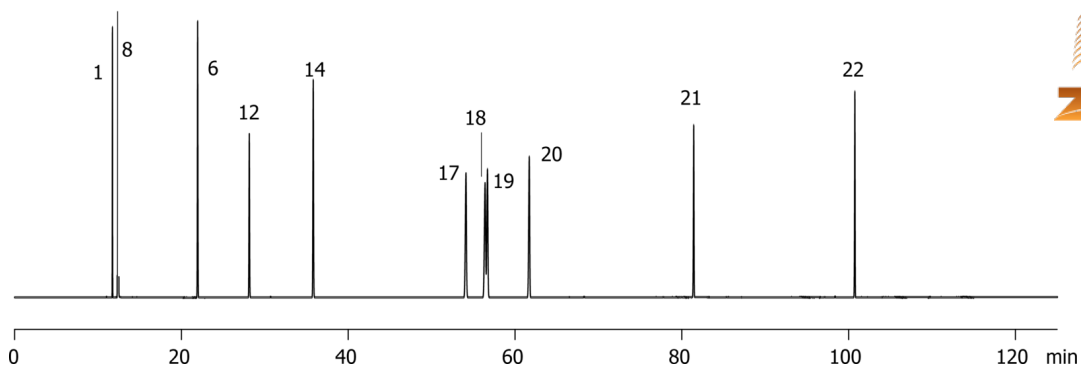
**Injection:** Split 40:1 0.2 µL @ 220°C

**Detection:** Flame Ionization (FID) (320°C)

14803



Products used in this application:



## PONA: Retention Markers on ZB-1

### ANALYTES:

- 1 Pentane
- 2 2,2-Dimethylpentane
- 3 Methylcyclopentane
- 4 Dimethylpentane
- 5 1-Methyl-1-cyclohexene
- 6 Benzene
- 7 Cyclohexane
- 8 2-Methylhexane
- 9 2,3-Dimethylpentane
- 10 3-Methylhexane
- 11 2,2,4-Trimethylpentane
- 12 Heptane
- 13 2,3,4-Trimethylpentane
- 14 Toluene
- 15 2,2,3-Trimethylpentane
- 16 2,3-Dimethylhexane
- 17 Ethylbenzene
- 18 m-Xylene
- 19 p-Xylene
- 20 o-Xylene
- 21 Decane
- 22 Dodecane

