

GC Application

ID No.: 14808

Industrial Solvents on ZB-WAX 30x0.25x0.25

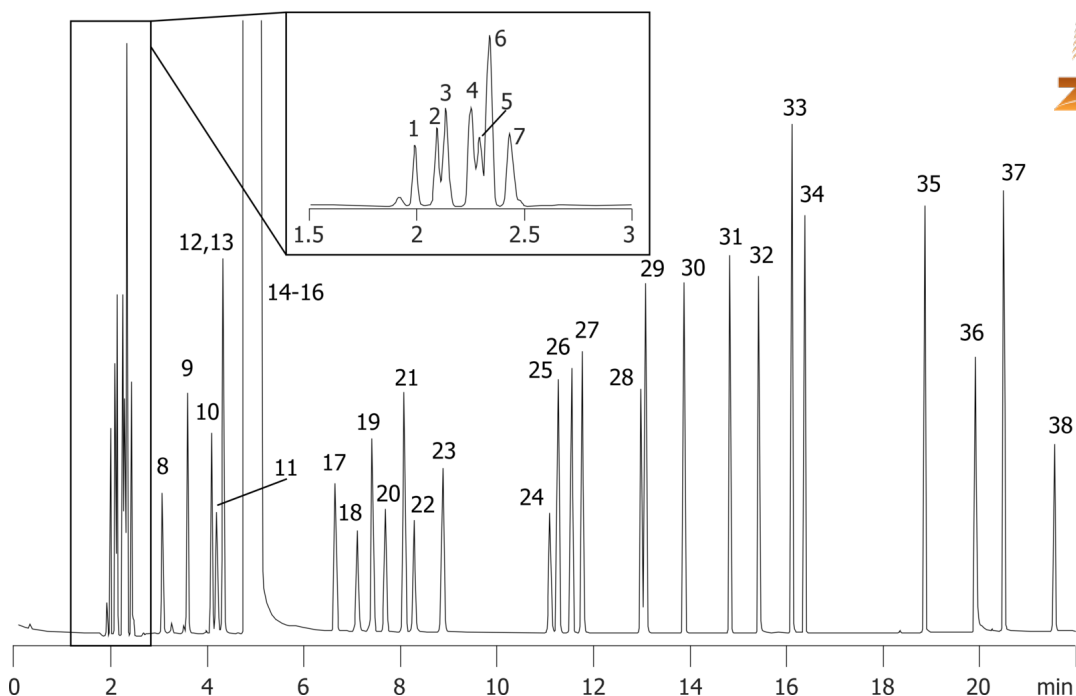
Column: Zebron™ ZB-WAX, GC Cap. Column 30 m x 0.25 mm x 0.25 µm, Ea
Phase: Polyethylene Glycol (PEG)
Dimensions: 30 meters x 0.25 mm x 0.25 µm
Order No: 7HG-G007-11
Oven Profile: 35°C for 5 min to 60°C at 4°C/min to 180°C at 12°C/min for 4 min.

Carrier Gas: Constant Flow Helium, 0.7 mL/min
Injection: split 100:1 1 µL @ 250°C
Detection: Mass Selective (MSD) (180°C)

14808



Products used in this application:



Industrial Solvents on ZB-WAX 30x0.25x0.25

ANALYTES:

- 1 Pentane
- 2 Hexane
- 3 Ethyl ether
- 4 Isooctane
- 5 Methyl tert-butyl ether
- 6 Heptane
- 7 Cyclohexane
- 8 Acetone
- 9 Tetrahydrofuran
- 10 Ethyl acetate
- 11 Methanol
- 12 t-Butanol
- 13 MEK
- 14 Methylene chloride
- 15 Ethanol
- 16 Benzene
- 17 Trichloroethylene
- 18 Acetonitrile
- 19 Tetrachloroethylene
- 20 Chloroform
- 21 Toluene
- 22 1-Propanol
- 23 1,4-Dioxane
- 24 Allyl alcohol
- 25 Ethylbenzene
- 26 p-Xylene
- 27 m-Xylene
- 28 Pyridine
- 29 o-Xylene
- 30 Chlorobenzene
- 31 Styrene
- 32 3-Picoline
- 33 N,N-Dimethylformamide
- 34 Anisole
- 35 Benzaldehyde
- 36 Ethylene glycol
- 37 N-Methyl-2-pyrrolidinone
- 38 Formamide

