

GC Application

ID No.: 14809

Industrial Solvents on ZB-WAX

Column: Zebron[™] ZB-WAX, GC Cap. Column 30 m x 0.53 mm x 1.00 μ m, Ea

Phase: Polyethylene Glycol (PEG)

Dimensions: 30 meters x 0.53 mm x 1 μ m

Order No: 7HK-G007-22

Oven Profile: 35°C for 4 min to 180°C at 15°C/min for 5 min.

Carrier Gas: Constant Flow Helium, 2.7 mL/min

Injection: Split 100:1 1 μ L @ 250°C

Detection: Flame Ionization (FID) (325°C)

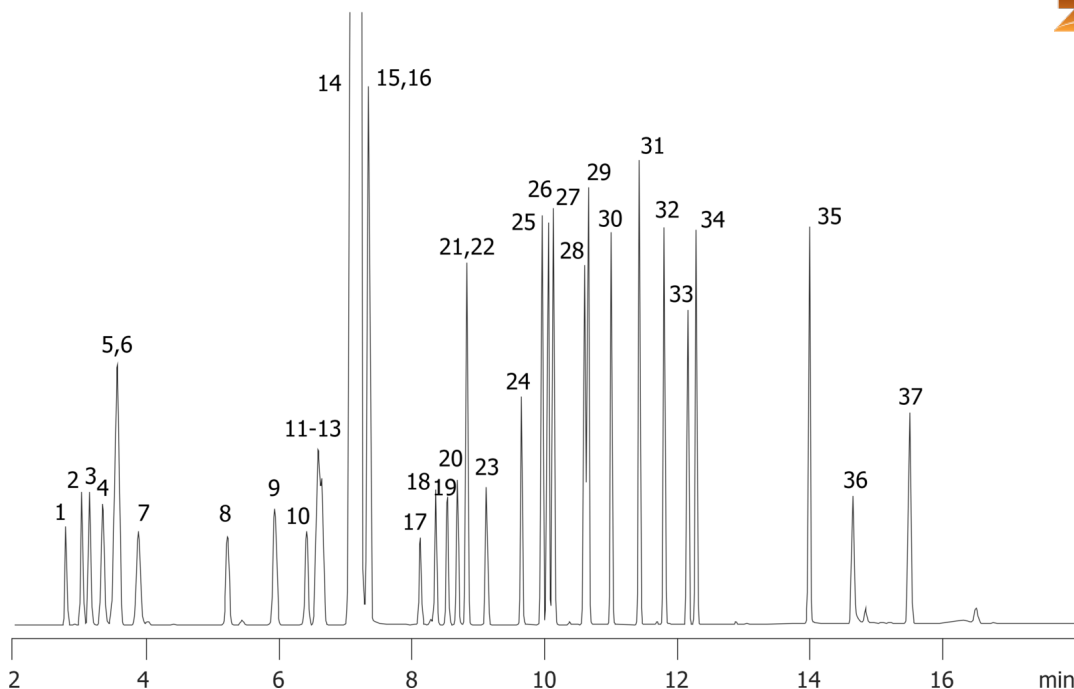
Detector Info: Analytes were 230ppm in dichloromethane



Products used in this application:



14809



Industrial Solvents on ZB-WAX

ANALYTES:

- 1 Pentane
- 2 Hexane
- 3 Ethyl ether
- 4 Isooctane
- 5 Methyl tert-butyl ether
- 6 Heptane
- 7 Cyclohexane
- 8 Acetone
- 9 Tetrahydrofuran
- 10 Ethyl acetate
- 11 Methanol
- 12 t-Butanol
- 13 MEK
- 14 Methylene chloride
- 15 Ethanol
- 16 Benzene
- 17 Trichloroethylene
- 18 Acetonitrile
- 19 Tetrachloroethylene
- 20 Chloroform
- 21 Toluene
- 22 1-Propanol
- 23 1,4-Dioxane
- 24 Allyl alcohol
- 25 Ethylbenzene
- 26 p-Xylene
- 27 m-Xylene
- 28 Pyridine
- 29 o-Xylene
- 30 Chlorobenzene
- 31 Styrene
- 32 3-Picoline
- 33 N,N-Dimethylformamide
- 34 Anisole
- 35 Benzaldehyde
- 36 Ethylene glycol
- 37 N-Methyl-2-pyrrolidinone

