

# GC Application

ID No.: 14816

## Glycols in Water on ZB-WAX

**Column:** Zebtron<sup>™</sup> ZB-WAX, GC Cap. Column 30 m x 0.53 mm x 1.00 μm, Ea

**Phase:** Polyethylene Glycol (PEG)

**Dimensions:** 30 meters x 0.53 mm x 1 μm

**Order No:** 7HK-G007-22

**Oven Profile:** 80°C to 230°C at 15°C/min for 10 min.

**Carrier Gas:** Constant Flow Helium, 6.6 mL/min

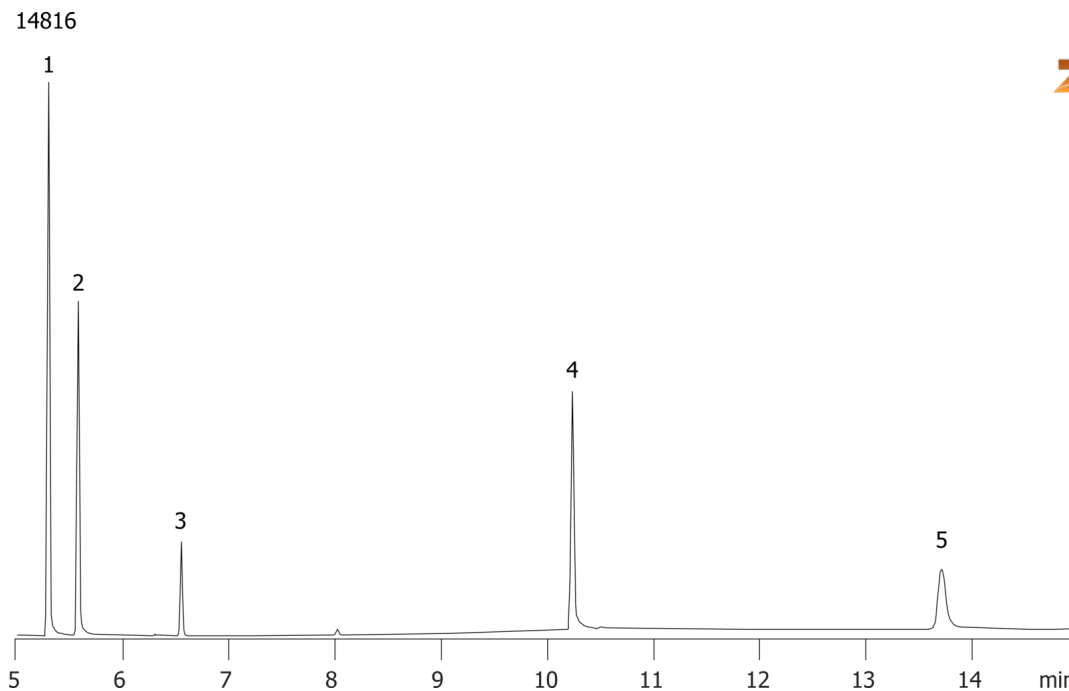
**Injection:** Splitless :1 1 μL @ 225°C

**Detection:** Flame Ionization (FID) (325°C)

**Analyst Note:** Analytes are 100ppm.



Products used in this application:



### ANALYTES:

- 1 Propylene glycol
- 2 Ethylene glycol
- 3 Acetamide
- 4 Triethylene glycol
- 5 Tetraethylene glycol

