

# GC Application

ID No.: 14833

## Even and Odd FAMES on ZB-5

**Column:** Zebtron™ ZB-5, GC Cap. Column 30 m x 0.25 mm x 0.25 μm, Ea

**Phase:** 5% Phenyl 95% Dimethylpolysiloxane

**Dimensions:** 30 meters x 0.25 mm x 0.25 μm

**Order No:** 7HG-G002-11

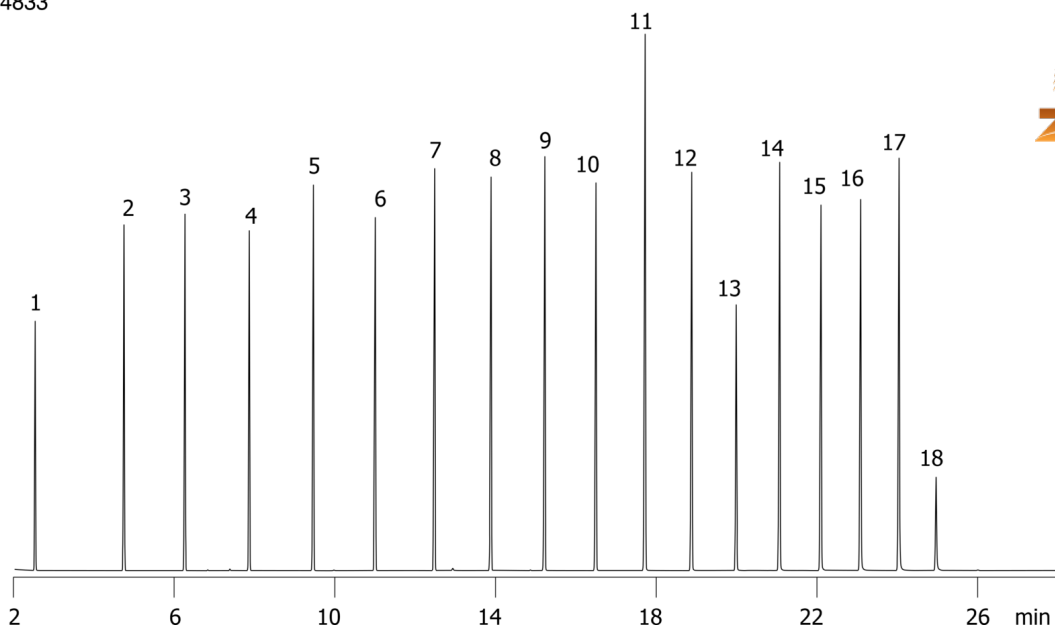
**Oven Profile:** 100°C for 2min to 280°C at 8°C/min for 5 min

**Carrier Gas:** Constant Flow Helium, 1.1 mL/min

**Injection:** split 20:1 0.2 μL @ 280°C

**Detection:** Mass Selective (MSD) (240°C)

14833



Products used in this application:



## Even and Odd FAMES on ZB-5

### ANALYTES:

- 1 Methyl caproate
- 2 Methyl caprylate
- 3 Methyl nonoate
- 4 Methyl caprate
- 5 Methyl undecanoate
- 6 Methyl laurate
- 7 Methyl tridecanoate
- 8 Methyl myristate
- 9 Methyl pentadecanoate
- 10 Methyl palmitate
- 11 Methyl heptadecanoate
- 12 Methyl stearate
- 13 Methyl nonadecanoate
- 14 Methyl arachidate
- 15 Methyl heneicosanoate
- 16 Methyl behenate
- 17 Methyl tricosanoate
- 18 Methyl lignocerate

