

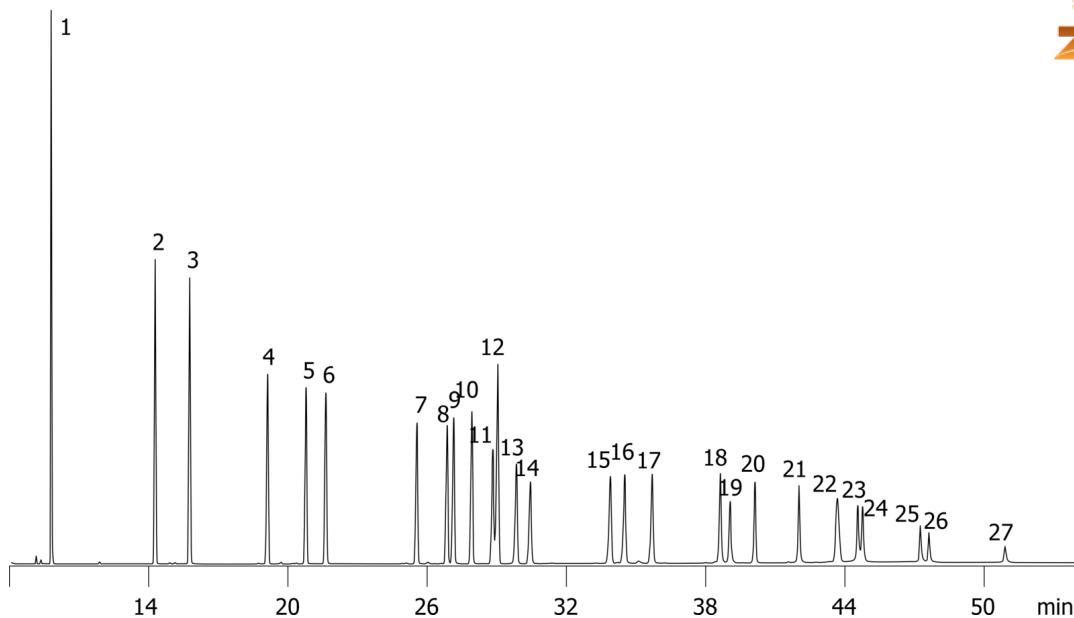
## Brominated Diphenyl Ethers (BDE's) on ZB-5

**Column:** Zebron<sup>™</sup> ZB-5, GC Cap. Column 30 m x 0.25 mm x 0.25 μm, Ea  
**Phase:** 5% Phenyl 95% Dimethylpolysiloxane  
**Dimensions:** 30 meters x 0.25 mm x 0.25 μm  
**Order No:** 7HG-G002-11  
**Oven Profile:** 110°C for 1 min to 180°C at 12°C/min for 1 min to 240°C at 4°C/min for 5min to 280°C at 4°C/min for 10 min.  
**Carrier Gas:** Constant Flow Helium, 1 mL/min  
**Injection:** Splitless :1 1 μL @ 275°C  
**Detection:** Mass Selective (MSD) (0°C)

14834



Products used in this application:



## Brominated Diphenyl Ethers (BDE's) on ZB-5

### ANALYTES:

- 1 BDE 3
- 2 BDE 7
- 3 BDE 15
- 4 PCG 112
- 5 BDE 17
- 6 BDE 28
- 7 BDE 50
- 8 BDE 49
- 9 BDE 71
- 10 BDE 47
- 11 BDE 66
- 12 Mirex
- 13 PCB 198
- 14 BDE 77
- 15 BDE 100
- 16 BDE 119
- 17 BDE 99
- 18 BDE 85
- 19 BDE 126
- 20 BDE 154
- 21 BDE 153
- 22 HBCD
- 23 BDE 138
- 24 BDE 166
- 25 BDE 128
- 26 BDE 183
- 27 BDE 181

