

# GC Application

ID No.: 14857

## Phenols ZB-WAX 30x0.25x0.25

**Column:** Zebron<sup>™</sup> ZB-WAX, GC Cap. Column 30 m x 0.25 mm x 0.25 µm, Ea

**Phase:** Polyethylene Glycol (PEG)

**Dimensions:** 30 meters x 0.25 mm x 0.25 µm

**Order No:** 7HG-G007-11

**Oven Profile:** 120°C to 240°C at 8°C for 10min.

**Carrier Gas:** Constant Flow Helium, 1.54 mL/min

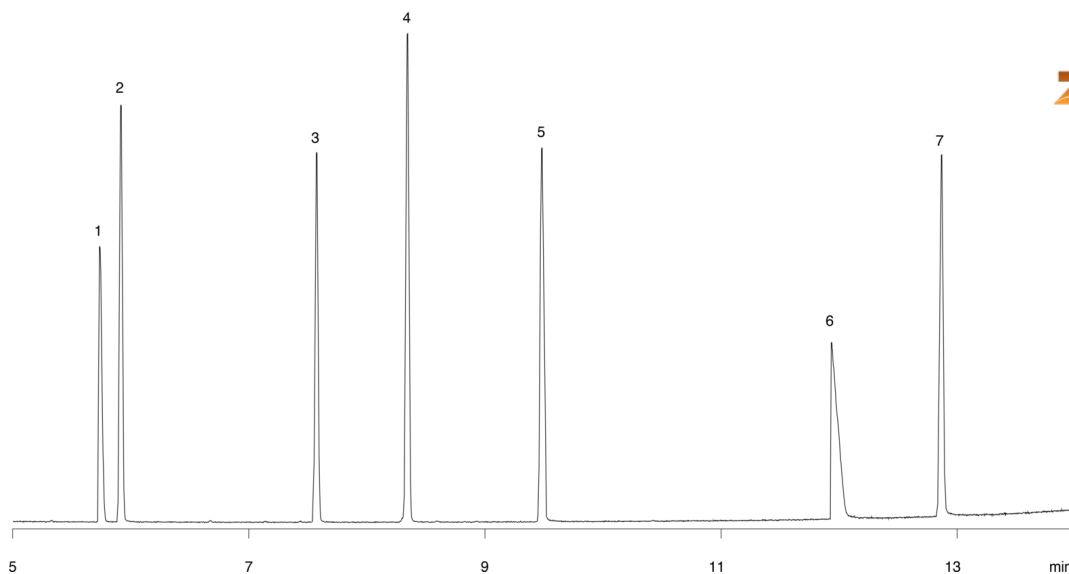
**Injection:** split 10:1 1 µL @ 230°C

**Detection:** Mass Selective (MSD) (240°C)

14857



Products used in this application:



### ANALYTES:

- 1 2-Nitrophenol
- 2 2-Chlorophenol
- 3 Phenol
- 4 2,4-Dimethylphenol
- 5 2,4-Dichlorophenol
- 6 2,4,6-Trichlorophenol
- 7 4-Chloro-3-methylphenol

