

Aniline - Phenol Separation - ZB-Wax 60x0.32x0.5

Column: Zebtron™ ZB-WAX, GC Cap. Column 60 m x 0.32 mm x 0.50 μm, Ea

Phase: Polyethylene Glycol (PEG)

Dimensions: 60 meters x 0.32 mm x 0.5 μm

Order No: 7KM-G007-17

Oven Profile: 130°C to 250°C at 5°C/min

Carrier Gas: Constant Flow Helium, 0.9 mL/min

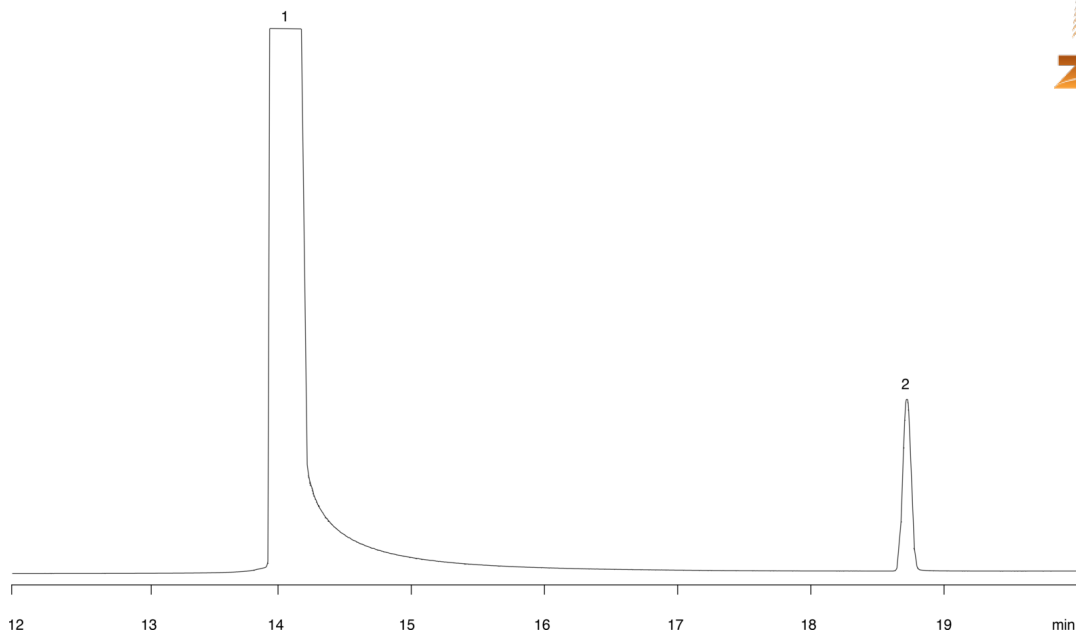
Injection: split 20:1 0.2 μL @ 275°C

Detection: Mass Selective (MSD) (240°C)

14861



Products used in this application:



ANALYTES:

- 1 Aniline
- 2 Phenol

