

## Chlorinated Hydrocarbons: EPA Method 612 - ZB-35 30x0.53x0.5

**Column:** Zebtron™ ZB-35, GC Cap. Column 30 m x 0.53 mm x 0.50 μm, Ea

**Phase:** 35% Phenyl 65% Dimethylpolysiloxane

**Dimensions:** 30 meters x 0.53 mm x 0.5 μm

**Order No:** 7HK-G003-17

**Oven Profile:** 40°C to 250°C at 8°C/min for 5 min.

**Carrier Gas:** Constant Flow Helium, 4.9 mL/min

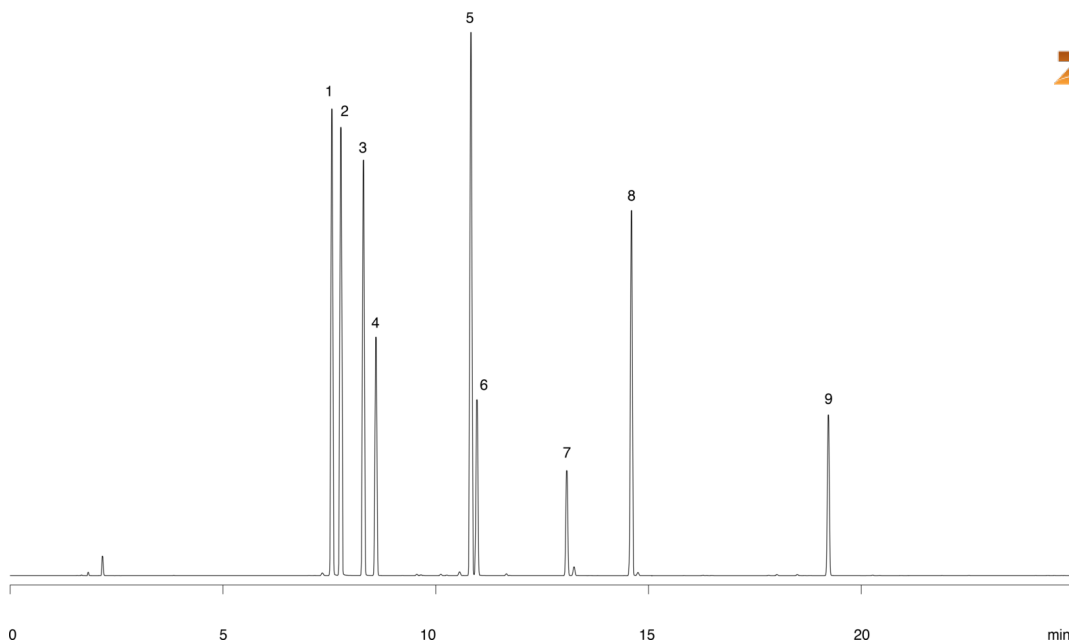
**Injection:** Split 15:1 1 μL @ 250°C

**Detection:** Flame Ionization (FID) (275°C)

14875



Products used in this application:



### ANALYTES:

- 1 1,3-Dichlorobenzene
- 2 1,4-Dichlorobenzene
- 3 1,2-Dichlorobenzene
- 4 Hexachloroethane
- 5 1,2,4-Trichlorobenzene
- 6 Hexachlorobutadiene
- 7 Hexachlorocyclopentadiene
- 8 2-Chloronaphthalene
- 9 Hexachlorobenzene

