

Phthalate Esters: EPA Method 606 - ZB-5 30x0.53x1.5

Column: Zebron™ ZB-5, GC Cap. Column 30 m x 0.53 mm x 1.50 μm, Ea

Phase: 5% Phenyl 95% Dimethylpolysiloxane

Dimensions: 30 meters x 0.53 mm x 1.5 μm

Order No: 7HK-G002-28

Oven Profile: 40°C for 6 min to 300°C at 10°C/min for 15 min

Carrier Gas: Constant Flow Helium, 12.9 mL/min

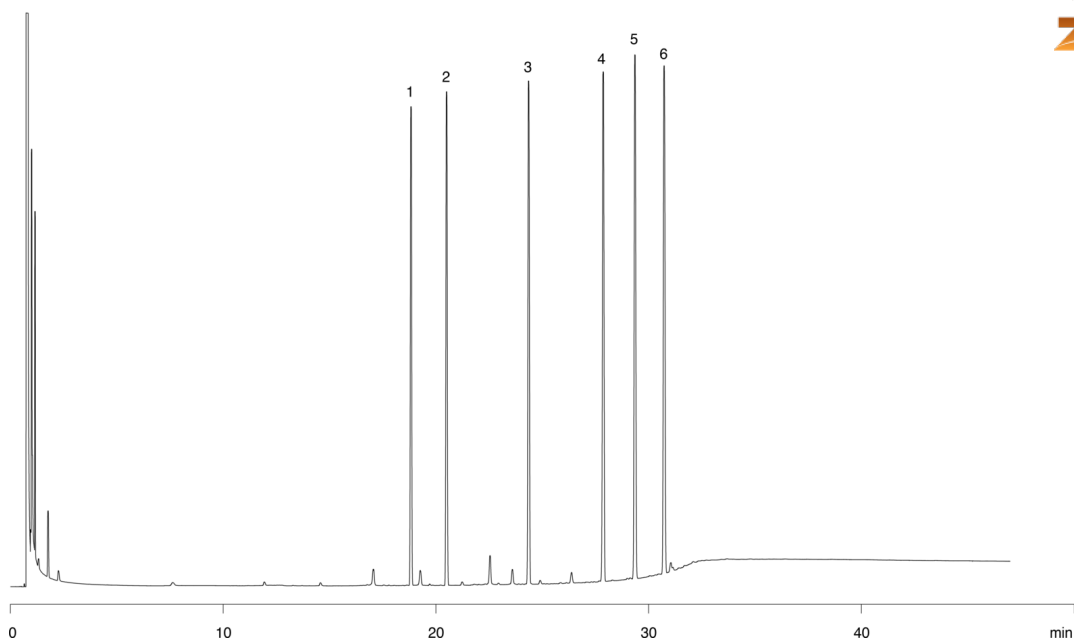
Injection: Split 20:1 1 μL @ 300°C

Detection: Flame Ionization (FID) (300°C)

14876



Products used in this application:



ANALYTES:

- 1 Dimethyl phthalate
- 2 Diethyl phthalate
- 3 Di-n-butyl phthalate
- 4 Butyl benzyl phthalate
- 5 bis(2-Ethylhexyl)phthalate
- 6 Di-n-octyl phthalate

