

# GC Application

ID No.: 14877

## Primary Amines - ZB-Wax 30x0.53x1.0

**Column:** Zebtron<sup>™</sup> ZB-WAX, GC Cap. Column 30 m x 0.53 mm x 1.00  $\mu$ m, Ea

**Phase:** Polyethylene Glycol (PEG)

**Dimensions:** 30 meters x 0.53 mm x 1  $\mu$ m

**Order No:** 7HK-G007-22

**Oven Profile:** 40°C for 1 min to 150°C at 30°C/min for 2 min.

**Carrier Gas:** Constant Flow Helium, 8 mL/min

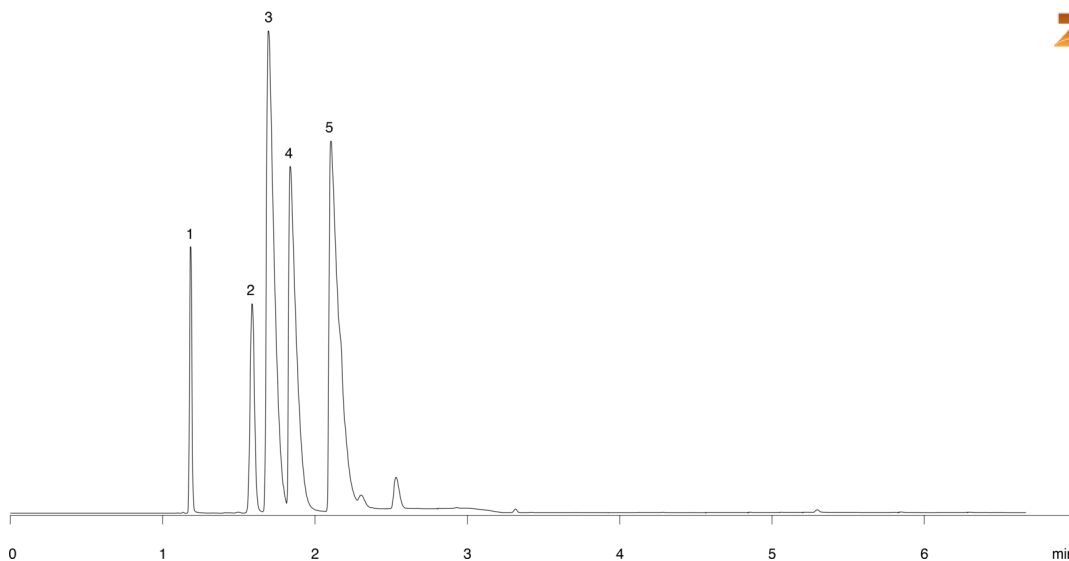
**Injection:** split 80:1 0.2  $\mu$ L @ 250°C

**Detection:** Flame Ionization (FID) (250°C)

14877



Products used in this application:



### ANALYTES:

- 1 Trimethylamine
- 2 Triethylamine
- 3 tert-Butyl amine
- 4 Diethylamine
- 5 Isobutylamine

