

GC Application

ID No.: 14878

Aldehydes - ZB-Wax 30x0.25x0.25

Column: Zebtron™ ZB-WAX, GC Cap. Column 30 m x 0.25 mm x 0.25 μm, Ea
Phase: Polyethylene Glycol (PEG)
Dimensions: 30 meters x 0.25 mm x 0.25 μm
Order No: 7HG-G007-11
Oven Profile: 40°C for 6 min to 70°C at 10°C/min to 230°C at 20°C/min for 5 min.

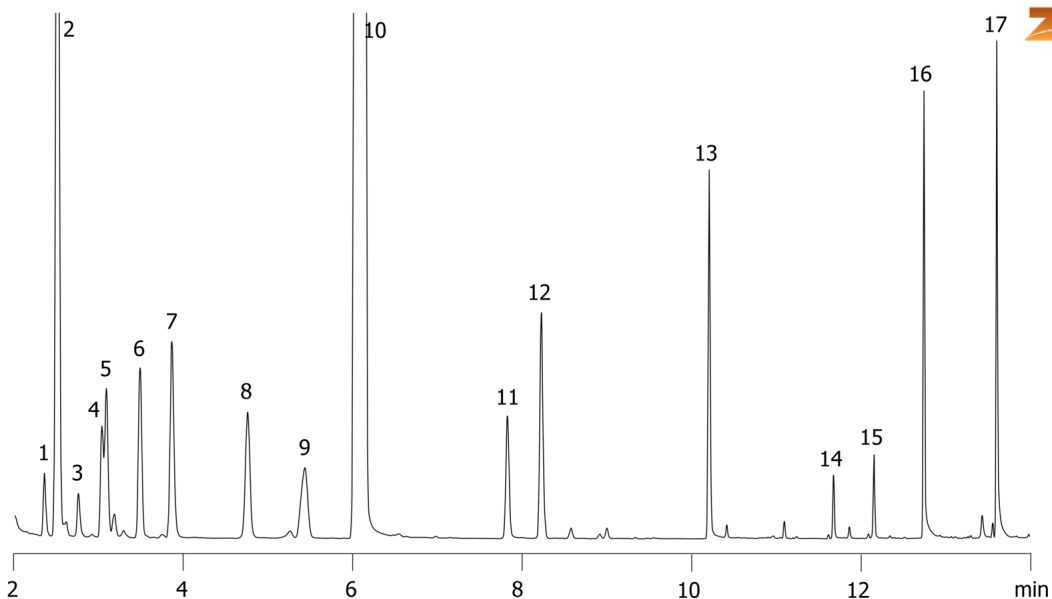
Carrier Gas: Constant Flow Helium, 0.8 mL/min
Injection: Split 20:1 1 μL @ 250°C
Detection: Mass Selective (MSD) (280°C)
Analyst Note: Analytes are 100-200ppm in pentane and chloroform.



Products used in this application:



14878



Aldehydes - ZB-Wax 30x0.25x0.25

ANALYTES:

- 1 Propanal
- 2 Cyclopentane
- 3 Propenal
- 4 Butanal
- 5 2-Methyl-2-propenal
- 6 2-Methylbutanal
- 7 Ethanol
- 8 Pentanal
- 9 2-Methylpentanal
- 10 Chloroform
- 11 Hexanal
- 12 Paraldehyde
- 13 Heptanal
- 14 Octanal
- 15 contaminant
- 16 Nonanal
- 17 Decanal

