

## Chlorinated Herbicides: EPA Method 615 - ZB-5 30x0.53x0.5

**Column:** Zebtron™ ZB-5, GC Cap. Column 30 m x 0.53 mm x 0.50 μm, Ea

**Phase:** 5% Phenyl 95% Dimethylpolysiloxane

**Dimensions:** 30 meters x 0.53 mm x 0.5 μm

**Order No:** 7HK-G002-17

**Oven Profile:** 60°C to 150°C at 8°C/min for 5 min to 210°C at 4°C/min.

**Carrier Gas:** Constant Flow Helium, 4.7 mL/min

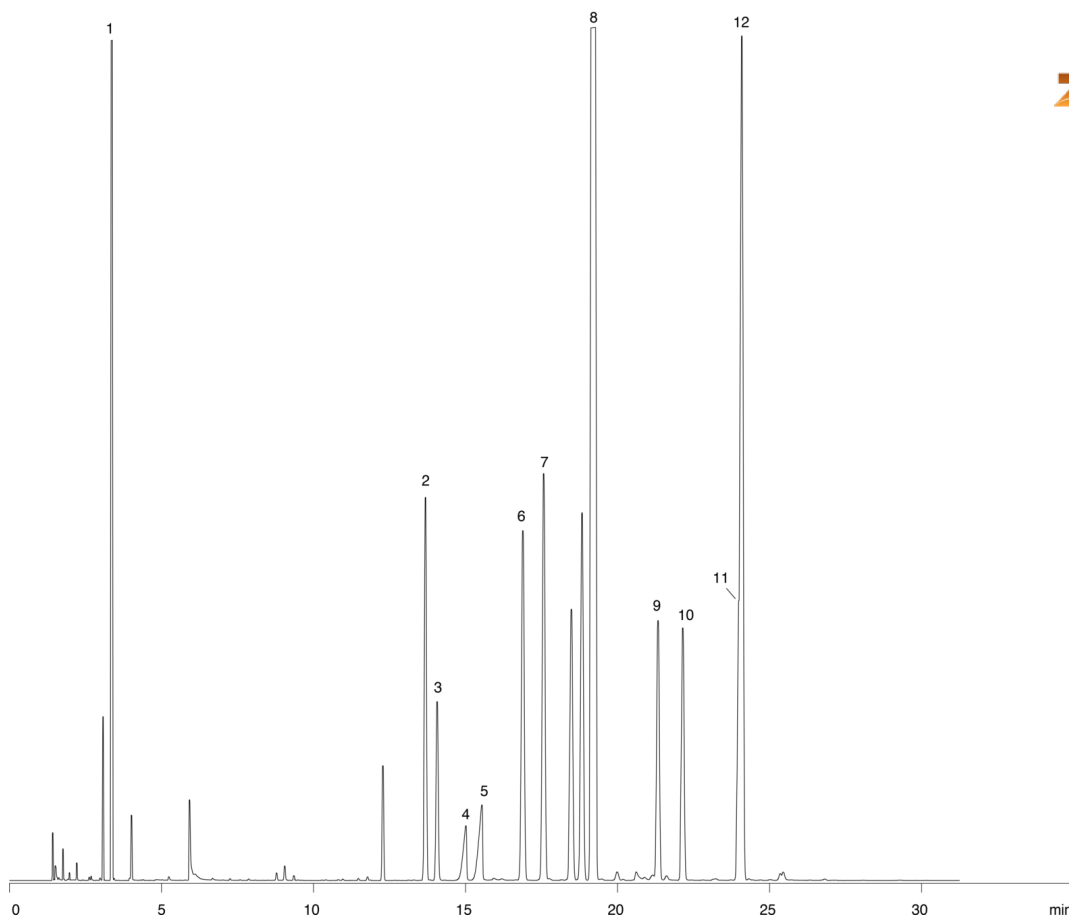
**Injection:** split 50:1 1 μL @ 250°C

**Detection:** Electron Capture (ECD) (275°C)

14880



Products used in this application:



## Chlorinated Herbicides: EPA Method 615 - ZB-5 30x0.53x0.5

### ANALYTES:

- 1 Dalapon
- 2 DCAA
- 3 Dicamba
- 4 MCPP
- 5 MCPA
- 6 Dichloroprop
- 7 2,4-D
- 8 DBOB
- 9 2,4,5-TP
- 10 2,4,5-T
- 11 2,4-DB
- 12 Dinoseb

