

Chlorinated Herbicides: EPA Method 615 - ZB-35 30x0.53x0.5

Column: Zebtron™ ZB-35, GC Cap. Column 30 m x 0.53 mm x 0.50 μm, Ea

Phase: 35% Phenyl 65% Dimethylpolysiloxane

Dimensions: 30 meters x 0.53 mm x 0.5 μm

Order No: 7HK-G003-17

Oven Profile: 60°C to 150°C at 8°C/min for 5 min to 210°C at 4°C/min.

Carrier Gas: Constant Flow Helium, 4.7 mL/min

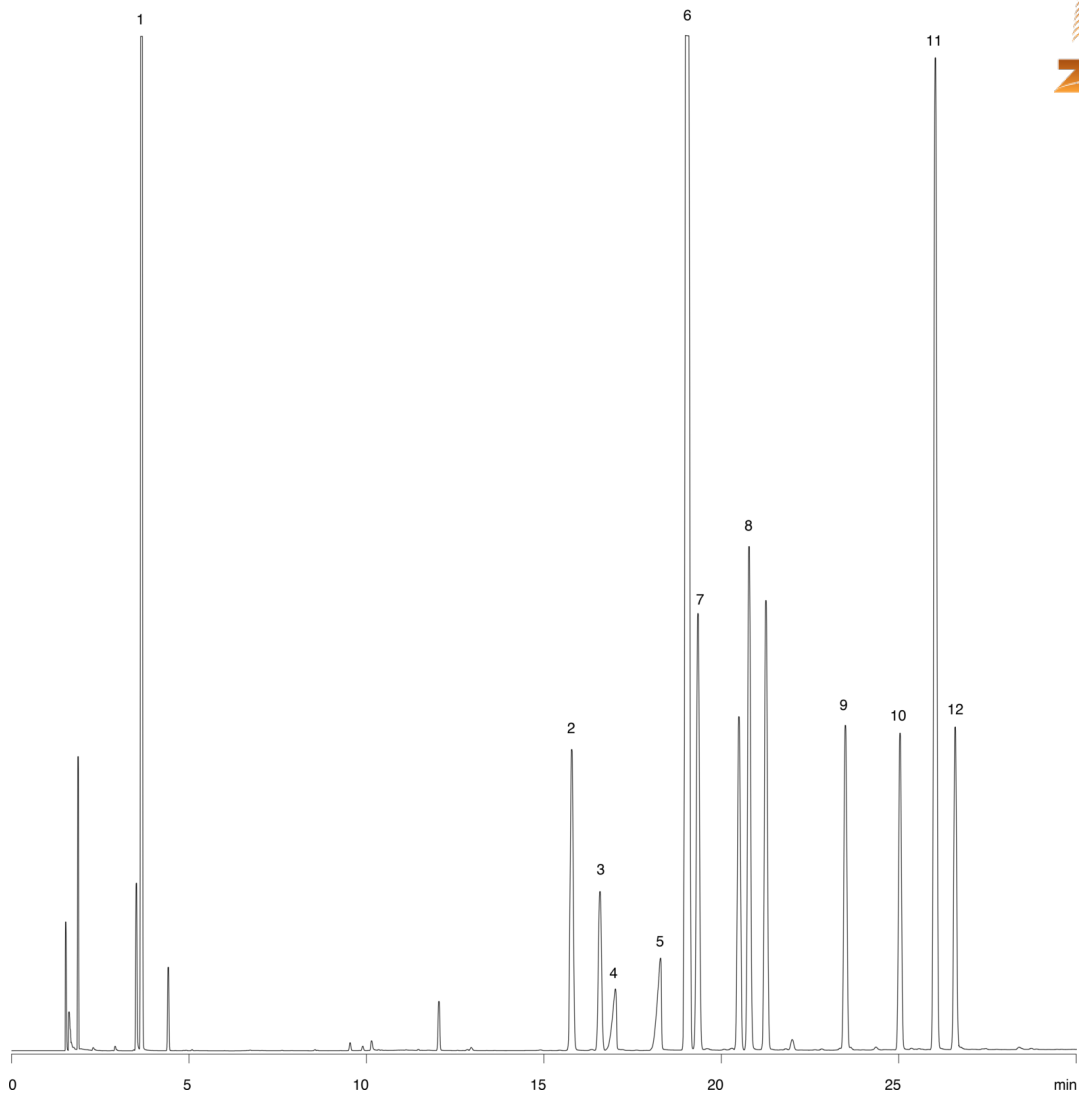
Injection: split 15:1 1 μL @ 250°C

Detection: Electron Capture (ECD) (275°C)

14881



Products used in this application:



Chlorinated Herbicides: EPA Method 615 - ZB-35 30x0.53x0.5

ANALYTES:

- 1 Dalopan
- 2 DCAA
- 3 Dicamba
- 4 MCPP
- 5 MCPA
- 6 DBOB
- 7 Dichloroprop
- 8 2,4-D
- 9 2,4,5-TP
- 10 2,4,5-T
- 11 Dinoseb
- 12 2,4-DB

