

GC Application

ID No.: 14902

BTEX ZB5 30x0.32x0.25

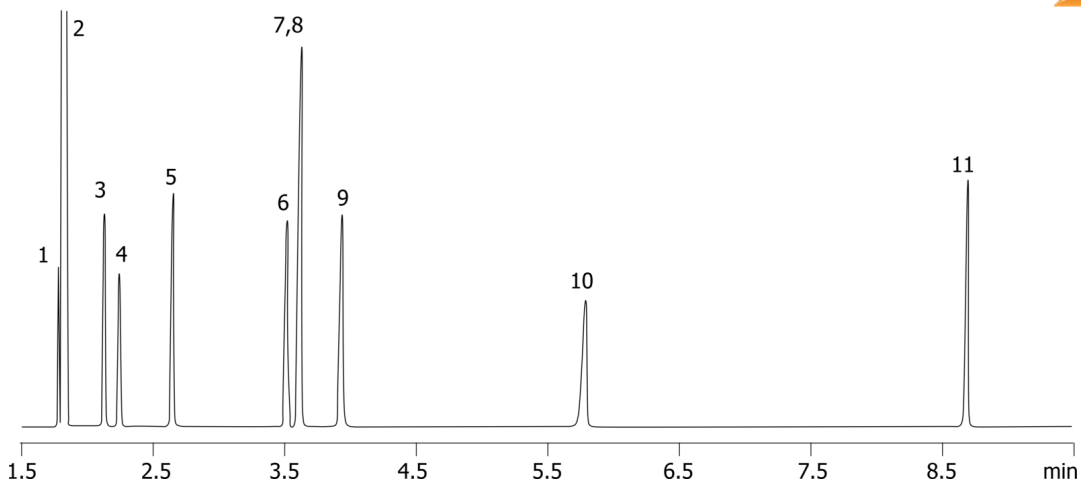
Column: Zebtron™ ZB-5, GC Cap. Column 30 m x 0.32 mm x 0.25 µm, Ea
Phase: 5% Phenyl 95% Dimethylpolysiloxane
Dimensions: 30 meters x 0.32 mm x 0.25 µm
Order No: 7HM-G002-11
Oven Profile: 60°C to 75°C at 15°C/min to 90°C at 3°C/min to 190°C at 25°C/min.

Carrier Gas: Constant Flow Helium, 2 mL/min
Injection: split 20:1 0.2 µL @ 225°C
Detection: Flame Ionization (FID) (300°C)

14902



Products used in this application:



BTEX ZB5 30x0.32x0.25

ANALYTES:

- 1 Pentane
- 2 Methylene chloride
- 3 Benzene
- 4 Heptane
- 5 Toluene
- 6 Ethylbenzene
- 7 m-Xylene
- 8 p-Xylene
- 9 o-Xylene
- 10 Decane
- 11 Dodecane

