

HPLC Application

ID No.: 14915

Hu_Insulin Degrad T2

Column: Jupiter[®] 4 μ m Proteo 90 Å, LC Column 250 x 4.6 mm, Ea

Dimensions: 250 x 4.6 mm ID

Order No: 00G-4396-E0

Elution Type: Gradient

Eluent A: 0.1%TFA in Water

Eluent B: 0.085% TFA in 95:5 ACN/Water

Gradient Profile:	Step No.	Time (min)	Pct A	Pct B
	1	0	80	20
	2	15	20	80

Flow Rate: 1 mL/min

Col. Temp.: ambient

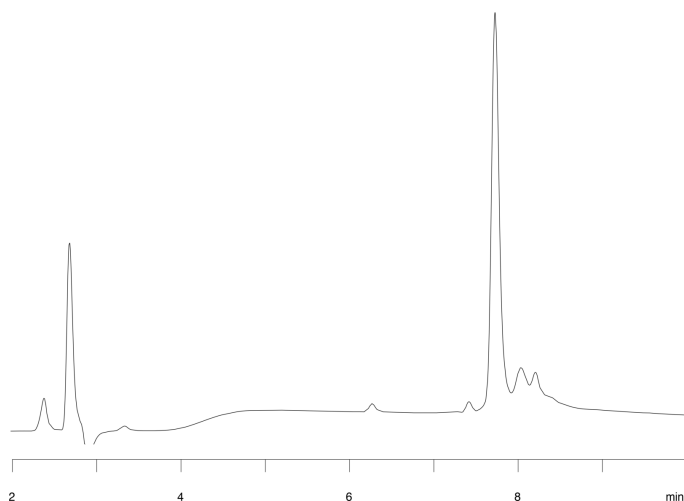
Detection: UV-Vis Abs.-Diode Array (PDA) @ 220 nm (ambient)

Analyst Note: SecurityGuard[™] Guard Cartridge System extends column lifetime.

- SecurityGuard Cartridges, C12 4 x 3.0mm, 10/Pk Part No.: AJ0-6074

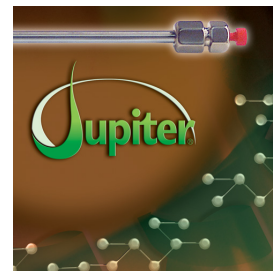
- Holder Part No.: KJ0-4282

14915



ANALYTES:

- 1 Human Insulin



Products used in this application:

