

# HPLC Application

ID No.: 14916

## Hu\_Insulin Degrad T3

**Column:** Jupiter® 4 µm Proteo 90 Å, LC Column 250 x 4.6 mm, Ea

**Dimensions:** 250 x 4.6 mm ID

**Order No:** 00G-4396-E0

**Elution Type:** Gradient

**Eluent A:** 0.1%TFA in Water

**Eluent B:** 0.085%TFA in 95:5 ACN/Water

Gradient Profile:	Step No.	Time (min)	Pct A	Pct B
	1	0	80	20
	2	15	20	80

**Flow Rate:** 1 mL/min

**Col. Temp.:** ambient

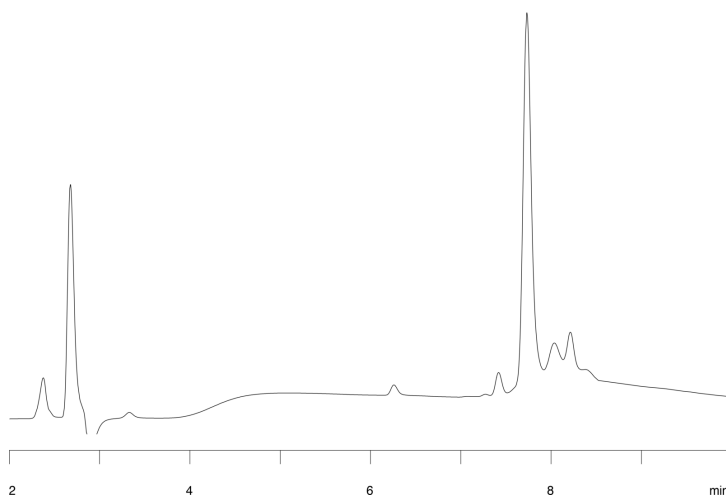
**Detection:** UV-Vis Abs.-Diode Array (PDA) @ 220 nm (ambient)

**Analyst Note:** SecurityGuard™ Guard Cartridge System extends column lifetime.

- SecurityGuard Cartridges, C12 4 x 3.0mm, 10/Pk Part No.: AJ0-6074

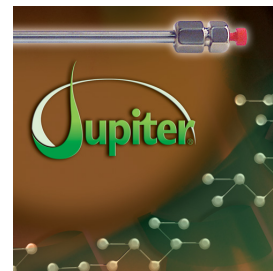
- Holder Part No.: KJ0-4282

14916



### ANALYTES:

1 Human Insulin



Products used in this application:

