

HPLC Application

ID No.: 14920

IgG Dog Native C5

Column: Jupiter® 5 µm C5 300 Å, LC Column 150 x 2 mm, Ea

Dimensions: 150 x 2 mm ID

Order No: 00F-4052-B0

Elution Type: Gradient

Eluent A: 0.1% TFA in 95:5 Water/ACN

Eluent B: 0.085% TFA in 75:20:5 ACN/IPA/Water

| Gradient Profile: | Step No. | Time (min) | Pct A | Pct B |
|--------------------------|-----------------|-------------------|--------------|--------------|
| | 1 | 0 | 80 | 20 |
| | 2 | 20 | 10 | 90 |

Flow Rate: 0.25 mL/min

Col. Temp.: ambient

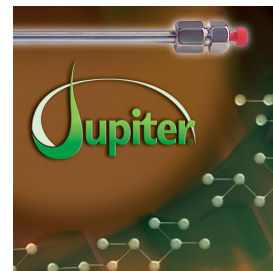
Detection: UV-Vis Abs.-Diode Array (PDA) @ 220 nm (ambient)

Analyst Note: SecurityGuard™ Guard Cartridge System extends column lifetime.

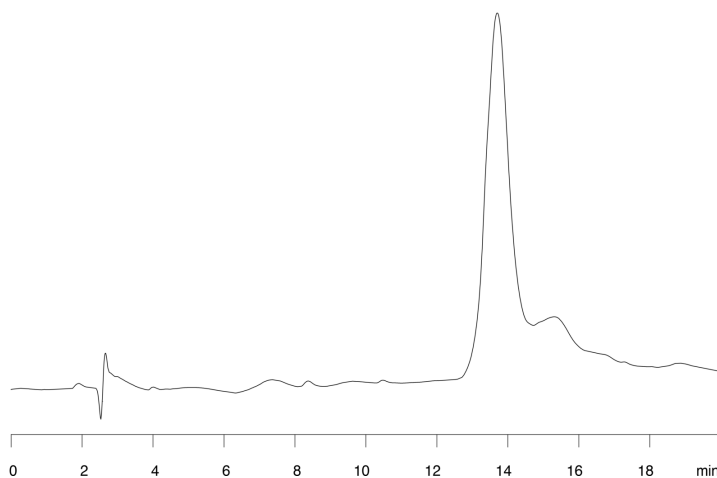
- SecurityGuard Cartridges, Widedpore C5 4 x 2.0mm, 10/Pk Part No.: AJ0-4326

- Holder Part No.: KJ0-4282

14920



Products used in this application:



ANALYTES:

1 IgG

Retention Time: 13.7 min

