

HPLC Application

ID No.: 14921

IgG Dog Native C18

Column: Jupiter® 5 µm C18 300 Å, LC Column 150 x 2 mm, Ea

Dimensions: 150 x 2 mm ID

Order No: 00F-4053-B0

Elution Type: Gradient

Eluent A: 0.1% TFA in 95:5 Water/ACN

Eluent B: 0.085% TFA in 75:20:5 ACN/IPA/Water

Gradient Profile:	Step No.	Time (min)	Pct A	Pct B
	1	0	80	20
	2	20	10	90

Flow Rate: 0.25 mL/min

Col. Temp.: ambient

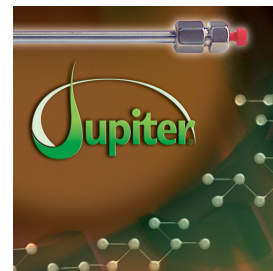
Detection: UV-Vis Abs.-Diode Array (PDA) @ 220 nm (ambient)

Analyst Note: SecurityGuard™ Guard Cartridge System extends column lifetime.

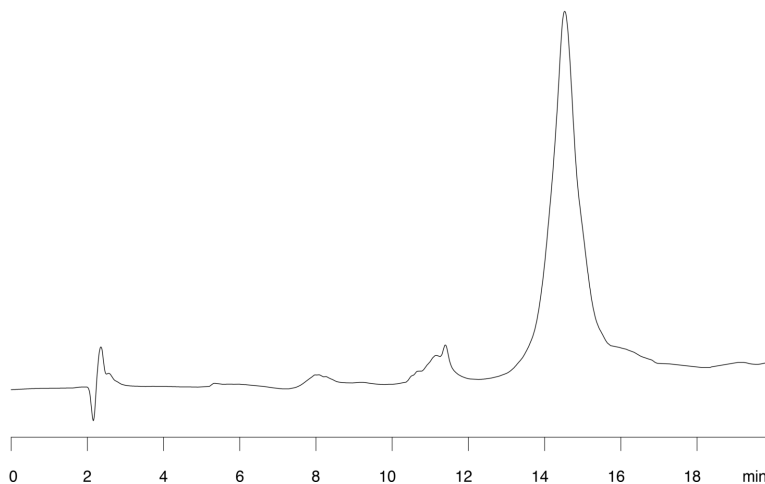
- SecurityGuard Cartridges, Widedpore C18 4 x 2.0mm, 10/Pk Part No.: AJ0-4320

- Holder Part No.: KJ0-4282

14921



Products used in this application:



ANALYTES:

1 IgG

Retention Time: 14.52 min

