

# HPLC Application

ID No.: 14924

## Jupiter C18 P2\_1

**Column:** Jupiter<sup>®</sup> 5 µm C18 300 Å, LC Column 250 x 2 mm, Ea

**Dimensions:** 250 x 2 mm ID

**Order No:** 00G-4053-B0

**Elution Type:** Gradient

**Eluent A:** 0.1% TFA in 95:5 Water/ACN

**Eluent B:** 0.085% TFA in 95:5 ACN/Water

Gradient Profile:	Step No.	Time (min)	Pct A	Pct B
	1	0	80	20
	2	15	15	85

**Flow Rate:** 0.25 mL/min

**Col. Temp.:** ambient

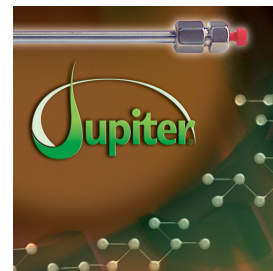
**Detection:** UV-Vis Abs.-Diode Array (PDA) @ 220 nm (ambient)

**Analyst Note:** SecurityGuard<sup>™</sup> Guard Cartridge System extends column lifetime.

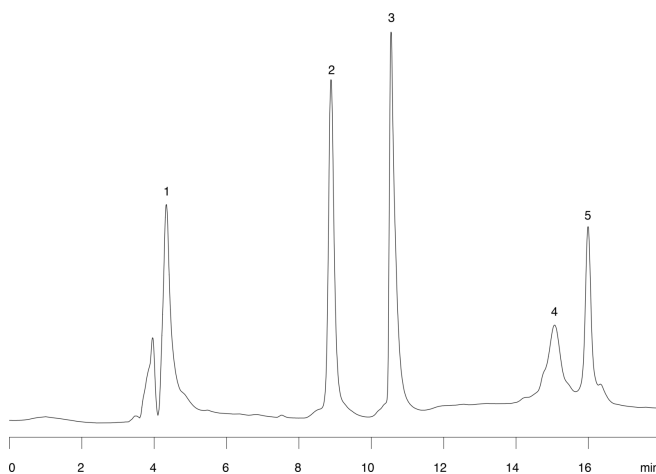
- SecurityGuard Cartridges, Widedpore C18 4 x 2.0mm, 10/Pk Part No.: AJ0-4320

- Holder Part No.: KJ0-4282

14924



Products used in this application:



### ANALYTES:

- 1** Aprotinin  
Retention Time: 4.34 min
- 2** Ribonuclease  
Retention Time: 8.89 min
- 3** Acid glycoprotein  
Retention Time: 10.55 min
- 4** Fibrinogen  
Retention Time: 15.1 min
- 5** Leptin  
Retention Time: 15.98 min

