

# HPLC Application

ID No.: 14928

## Jupiter C18 PS5Rd1

**Column:** Jupiter<sup>®</sup> 5 µm C18 300 Å, LC Column 150 x 2 mm, Ea

**Dimensions:** 150 x 2 mm ID

**Order No:** 00F-4053-B0

**Elution Type:** Gradient

**Eluent A:** 0.1% TFA in 95:5 Water/ACN

**Eluent B:** 0.085% TFA in 95:5 ACN/Water

Gradient Profile:	Step No.	Time (min)	Pct A	Pct B
	1	0	80	20
	2	20	15	85

**Flow Rate:** 0.25 mL/min

**Col. Temp.:** ambient

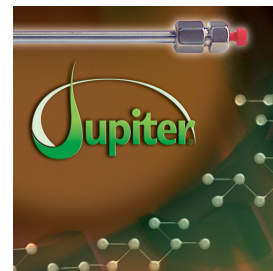
**Detection:** UV-Vis Abs.-Diode Array (PDA) @ 220 nm (ambient)

**Analyst Note:** SecurityGuard<sup>™</sup> Guard Cartridge System extends column lifetime.

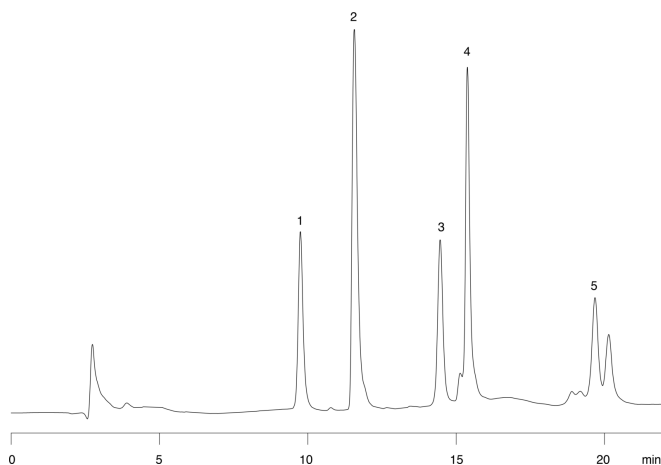
- SecurityGuard Cartridges, Widedpore C18 4 x 2.0mm, 10/Pk Part No.: AJ0-4320

- Holder Part No.: KJ0-4282

14928



Products used in this application:



### ANALYTES:

- 1** Ribonuclease  
Retention Time: 9.78 min
- 2** Insulin  
Retention Time: 11.566 min
- 3** Apotransferrin  
Retention Time: 14.46 min
- 4** Lactalbumin  
Retention Time: 15.38 min
- 5** Leptin  
Retention Time: 19.68 min

