

# HPLC Application

ID No.: 14931

## Jupiter C4 P4\_1

**Column:** Jupiter<sup>®</sup> 5 µm C4 300 Å, LC Column 250 x 2 mm, Ea

**Dimensions:** 250 x 2 mm ID

**Order No:** 00G-4167-B0

**Elution Type:** Gradient

**Eluent A:** 0.1% TFA in 95:5 Water/ACN

**Eluent B:** 0.085% TFA in 75:20:5 ACN/IPA/Water

Gradient Profile:	Step No.	Time (min)	Pct A	Pct B
	1	0	80	20
	2	20	20	80

**Flow Rate:** 0.22 mL/min

**Col. Temp.:** ambient

**Detection:** UV-Vis Abs.-Diode Array (PDA) @ 220 nm (ambient)

**Analyst Note:** SecurityGuard<sup>™</sup> Guard Cartridge System extends column lifetime.

- SecurityGuard Cartridges, Widepore C4 4 x 2.0mm, 10/Pk Part No.: AJ0-4329

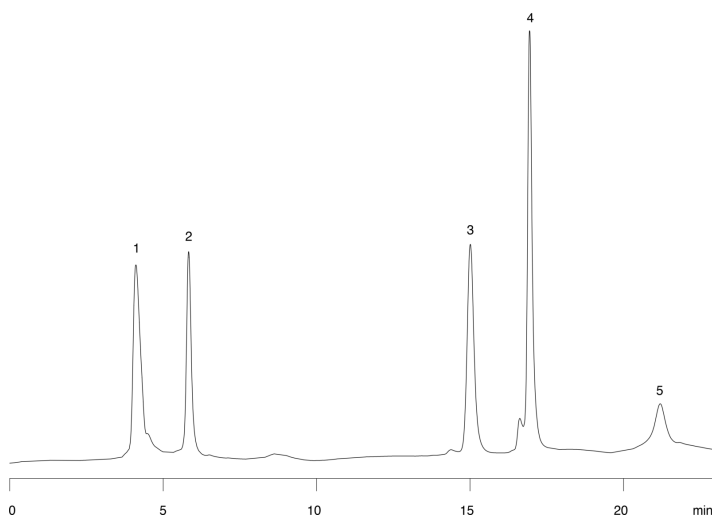
- Holder Part No.: KJ0-4282



Products used in this application:



14931



### ANALYTES:

- 1** Aprotinin  
Retention Time: 4.11 min
- 2** Ribonuclease  
Retention Time: 5.83 min
- 3** Apoferritin  
Retention Time: 15 min
- 4** Lactalbumin  
Retention Time: 16.94 min
- 5** Actin  
Retention Time: 21.2 min

