

Jupiter C4 P3_1

Column: Jupiter® 5 µm C4 300 Å, LC Column 250 x 2 mm, Ea

Dimensions: 250 x 2 mm ID

Order No: 00G-4167-B0

Elution Type: Gradient

Eluent A: 0.1% TFA 95:5 Water/ACN

Eluent B: 0.085% TFA in 95:5 ACN/Water

Gradient Profile:	Step No.	Time (min)	Pct A	Pct B
	1	0	85	15
	2	21	15	85

Flow Rate: 0.2 mL/min

Col. Temp.: ambient

Detection: UV-Vis Abs.-Diode Array (PDA) @ 220 nm (ambient)

Analyst Note: SecurityGuard™ Guard Cartridge System extends column lifetime.

- SecurityGuard Cartridges, Widedpore C4 4 x 2.0mm, 10/Pk Part No.: AJ0-4329

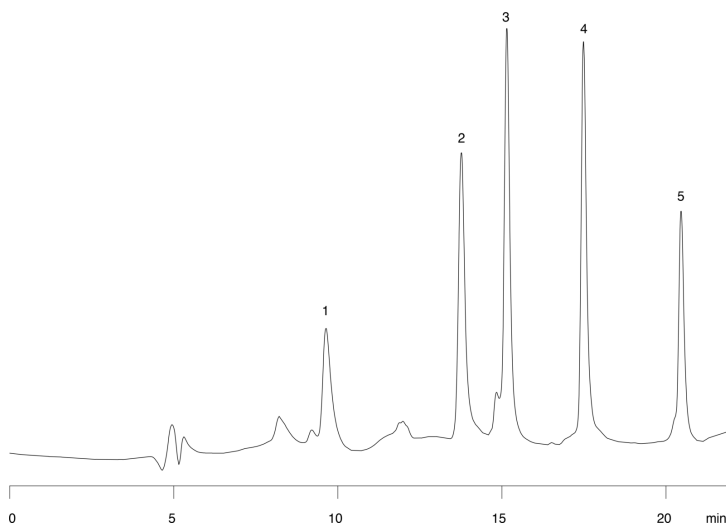
- Holder Part No.: KJ0-4282



Products used in this application:



14934



ANALYTES:

- 1** Aprotinin
Retention Time: 9.64 min
- 2** Ribonuclease
Retention Time: 13.76 min
- 3** Lysozyme
Retention Time: 15.15 min
- 4** Lactalbumin
Retention Time: 17.49 min
- 5** Leptin
Retention Time: 20.46 min

