

GC Application

ID No.: 14946

EPA 8270C on ZB-5MS 30x0.25x0.5

Column: Zebtron[™] ZB-5MS, GC Cap. Column 30 m x 0.25 mm x 0.50 μm, Ea

Phase: 5% Phenyl-Arylene 95% Dimethylpolysiloxane

Dimensions: 30 meters x 0.25 mm x 0.5 μm

Order No: 7HG-G010-17

Oven Profile: 50°C for 3 min to 325°C at 9°C/min for 2 min

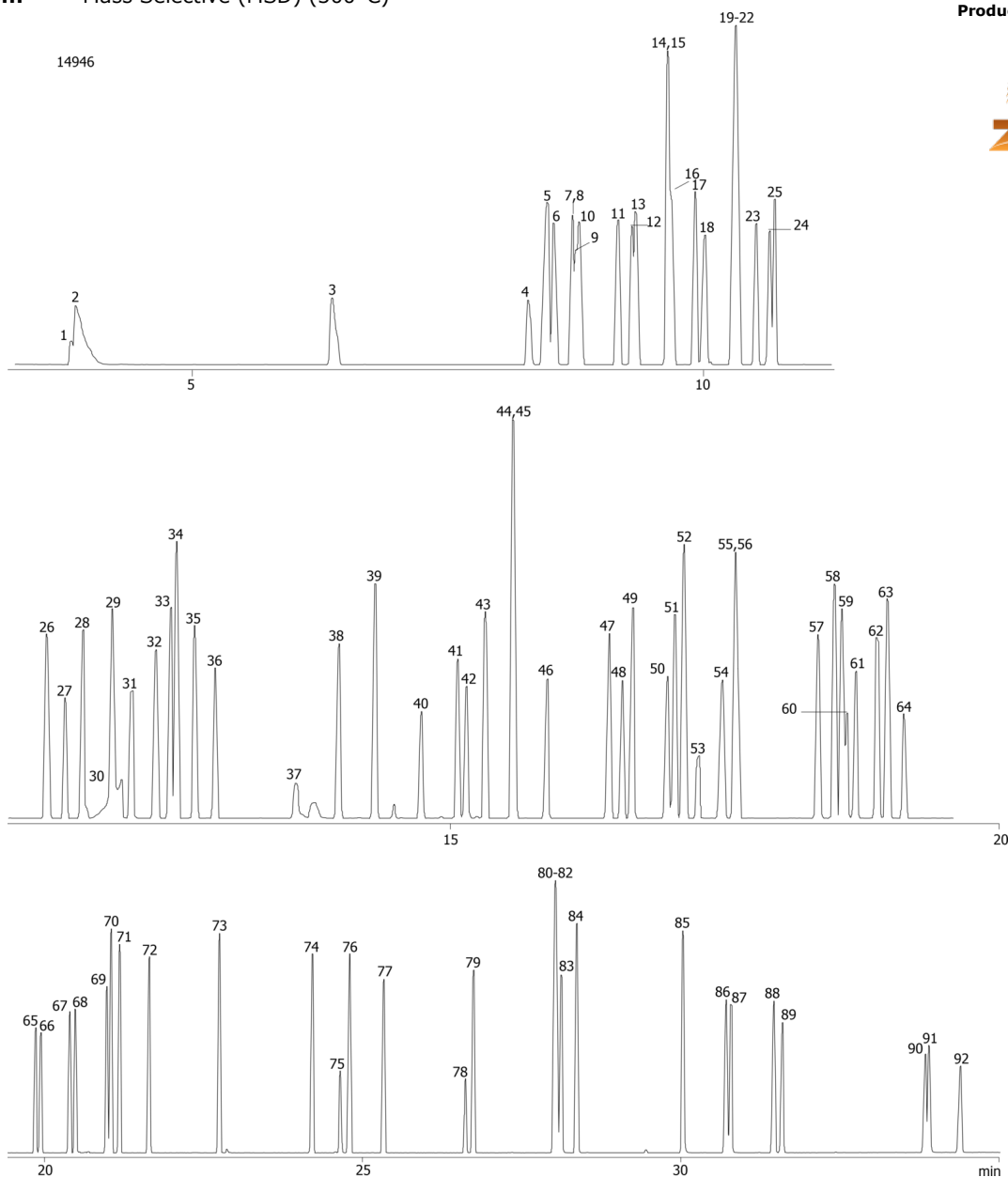
Carrier Gas: Constant Flow Helium, 1.88 mL/min

Injection: Splitless :1 1 μL @ 250°C

Detection: Mass Selective (MSD) (300°C)



Products used in this application:



EPA 8270C on ZB-5MS 30x0.25x0.5

ANALYTES:

1	n-Nitrosodidimethylamine	41	2,4,6-Trichlorophenol	81	3,3'-Dichlorobenzidine
2	Pyridine	42	2,4,5-Trichlorophenol	82	Chrysene-d12
3	2-Fluorophenol	43	2-Fluorobiphenyl	83	Chrysene
4	Benzaldehyde	44	1,1'-Biphenyl	84	bis(2-Ethylhexyl)phthalate
5	Phenol-d5	45	2-Chloronaphthalene	85	Di-n-octylphthalate
6	Phenol	46	2-Nitroaniline	86	Benzo[b]fluoranthene
7	Aniline	47	Dimethylphthalate	87	Benzo[k]fluoranthene
8	bis(2-Chloroethyl)ether	48	2,6-Dinitrotoluene	88	Benzo[a]pyrene
9	2-Chlorophenol-d4	49	Acenaphthylene	89	Perylene-d12
10	2-Chlorophenol	50	3-Nitroaniline	90	Indeno[1,2,3-cd]pyrene
11	1,3-Dichlorobenzene	51	Acenaphthene-d10	91	Dibenz[a,h]anthracene
12	1,4-Dichlorobenzene-d4	52	Acenaphthene	92	Benzo[g,h,i]perylene
13	1,4-Dichlorobenzene	53	2,4-Dinitrophenol		
14	1,2-Dichlorobenzene-d4	54	4-Nitrophenol		
15	Benzyl alcohol	55	Dibenzofuran		
16	1,2-Dichlorobenzene	56	2,4-Dinitrotoluene		
17	2-Methylphenol	57	Diethylphthalate		
18	bis(2-Chloroisopropyl)ether	58	Fluorene		
19	Acetophenone	59	4-Chlorophenylphenylether		
20	3-Methylphenol	60	4-Nitroaniline		
21	4-Methylphenol	61	4,6-Dinitro-2-methylphenol		
22	N-Nitroso-di-n-propylamine	62	n-Nitrosodiphenylamine		
23	Hexachloroethane	63	1,2-Diphenylhydrazine		
24	Nitrobenzene-d5	64	2,4,6-Tribromophenol		
25	Nitrobenzene	65	4-Bromophenyl phenyl ether		
26	Isophorone	66	Hexachlorobenzene		
27	2-Nitrophenol	67	Atrazine		
28	2,4-Dimethylphenol	68	Pentachlorophenol		
29	bis(2-Chloroethoxy)methane	69	Phenanthrene-d10		
30	Benzoic acid	70	Phenanthrene		
31	2,4-Dichlorophenol	71	Anthracene		
32	1,2,4-Trichlorobenzene	72	Carbazole		
33	Naphthalene-d8	73	Di-n-butyl phthalate		
34	Naphthalene	74	Fluoranthene		
35	4-Chloroaniline	75	Benzidine		
36	Hexachlorobutadiene	76	Pyrene		
37	Caprolactam	77	Terphenyl-d14		
38	4-Chloro-3-methylphenol	78	3,3'-Dimethylbenzidine		
39	2-Methylnaphthalene	79	Butylbenzyl phthalate		
40	Hexachlorocyclopentadiene	80	Benzo[a]anthracene		

