

GC Application

ID No.: 14953

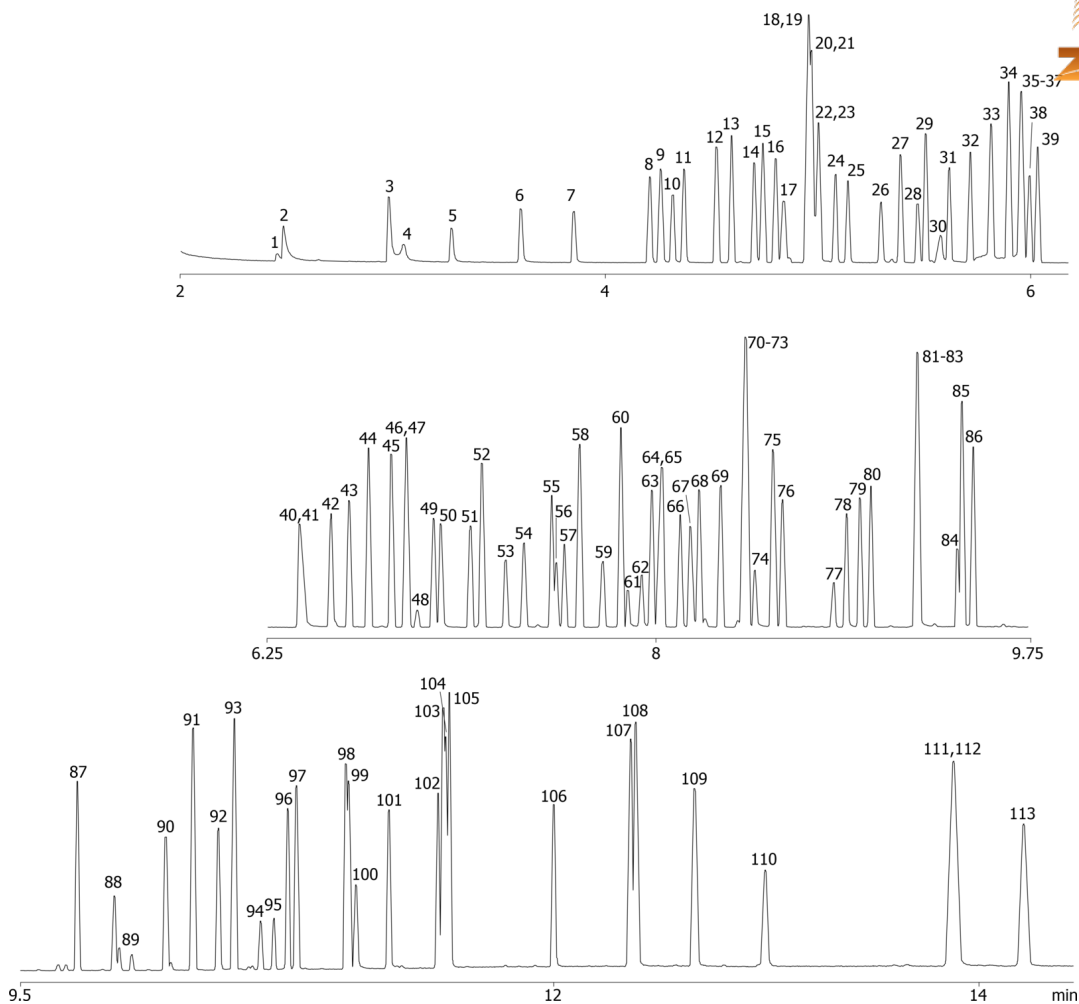
EPA Method 8270C on ZB-5MS 30x0.25x0.25

Column: Zebtron™ ZB-5MS, GC Cap. Column 30 m x 0.25 mm x 0.25 µm, Ea
Phase: 5% Phenyl-Arylene 95% Dimethylpolysiloxane
Dimensions: 30 meters x 0.25 mm x 0.25 µm
Order No: 7HG-G010-11
Oven Profile: 40°C for 0.5 min to 220°C at 22°C/min to 325°C at 35°C/min for 3 min

Carrier Gas: Constant Flow Helium, 1.4 mL/min
Injection: Split 10:1 1 µL @ 250°C
Detection: Mass Selective (MSD) (240°C)
14953



Products used in this application:



EPA Method 8270C on ZB-5MS 30x0.25x0.25

ANALYTES:

1	N-Nitrosodimethylamine	41	1,4-Phenylenediamine	81	Pentachlorophenol
2	Pyridine	42	4-Chloro-3-methylphenol	82	4-Aminobiphenyl
3	2-Picoline	43	Safrole	83	Pentachloronitrobenzene
4	N-Nitrosomethylethylamine	44	2-Methylnaphthalene	84	Dinoseb
5	Methyl methanesulfonate	45	1-Methylnaphthalene	85	Phenanthrene
6	N-Nitrosodiethylamine	46	Hexachlorocyclopentadiene	86	Anthracene
7	Ethyl methanesulfonate	47	1,2,4,5-Tetrachlorobenzene	87	Dibutyl phthalate
8	Phenol	48	Isosafrole	88	4-Nitroquinoline-n-oxide
9	Aniline	49	2,4,6-Trichlorophenol	89	Methapyriline
10	bis(2-Chloroethyl)ether	50	2,4,5-Trichlorophenol	90	Isodrin
11	2-Chlorophenol	51	Isosafrole	91	Fluoranthene
12	1,3-Dichlorobenzene	52	2-Chloronaphthalene	92	Benzidine
13	1,4-Dichlorobenzene	53	2-Nitroaniline	93	Pyrene
14	Benzyl alcohol	54	1,4-Naphthoquinone	94	Aramite
15	1,2-Dichlorobenzene	55	Dimethyl phthalate	95	Aramite
16	2-Methylphenol	56	1,3-Dinitrobenzene	96	Dimethylaminoazobenzene
17	bis(Chloroisopropyl)ether	57	2,6-Dinitrotoluene	97	Chlorobenzilate
18	N-Nitrosopyrrolidone	58	Acenaphthylene	98	3,3-Dimethylbenzidine
19	3-Methylphenol / 4-Methylphenol	59	3-Nitroaniline	99	Benzyl butyl phthalate
20	N-Nitroso-di-n-propylamine	60	Acenaphthene	100	Kepone
21	Acetophenone	61	2,4-Dinitrophenol	101	2-Acetylaminofluorene
22	N-Nitrosomorpholine	62	4-Nitrophenol	102	3,3'-Dichlorobenzidine
23	2-Toluidine	63	Pentachlorobenzene	103	Benz[a]anthracene
24	Hexachloroethane	64	2,4-Dinitrotoluene	104	bis(2-Ethylhexyl)phthalate
25	Nitrobenzene	65	Dibenzofuran	105	Chrysene
26	N-Nitrosopiperidine	66	1-Naphthalenamine	106	Di-n-octyl phthalate
27	Isophorone	67	2,3,4,6-Tetrachlorophenol	107	Benzo[b]fluoranthene
28	2-Nitrophenol	68	2-Naphthalenamine	108	Benzo[k]fluoranthene
29	2,4-Dimethylphenol	69	Diethyl phthalate	109	Benzo[a]pyrene
30	Benzoic acid	70	Fluorene	110	3-Methylcholanthrene
31	bis(2-Chloroethoxy)methane	71	2-Methyl-5-nitroaniline	111	Indeno[1,2,3-cd]pyrene
32	2,4-Dichlorophenol	72	4-Chlorophenylphenylether	112	Dibenz[a,h]anthracene
33	1,2,4-Trichlorobenzene	73	4-Nitroaniline	113	Benzo[g,h,i]perylene
34	Naphthalene	74	4,6-Dinitro-2-methylphenol		
35	alpha,alpha-Dimethylphenylamine	75	Diphenylamine		
36	4-Chloroaniline	76	Azobenzene		
37	2,6-Dichlorophenol	77	1,3,5-Trinitrobenzene		
38	Hexachloropropene	78	Phenacetin		
39	Hexachloro-1,3-butadiene	79	4-Bromophenyl phenyl ether		
40	N-Nitrosodibutylamine	80	Hexachlorobenzene		

