

GC Application

ID No.: 14960

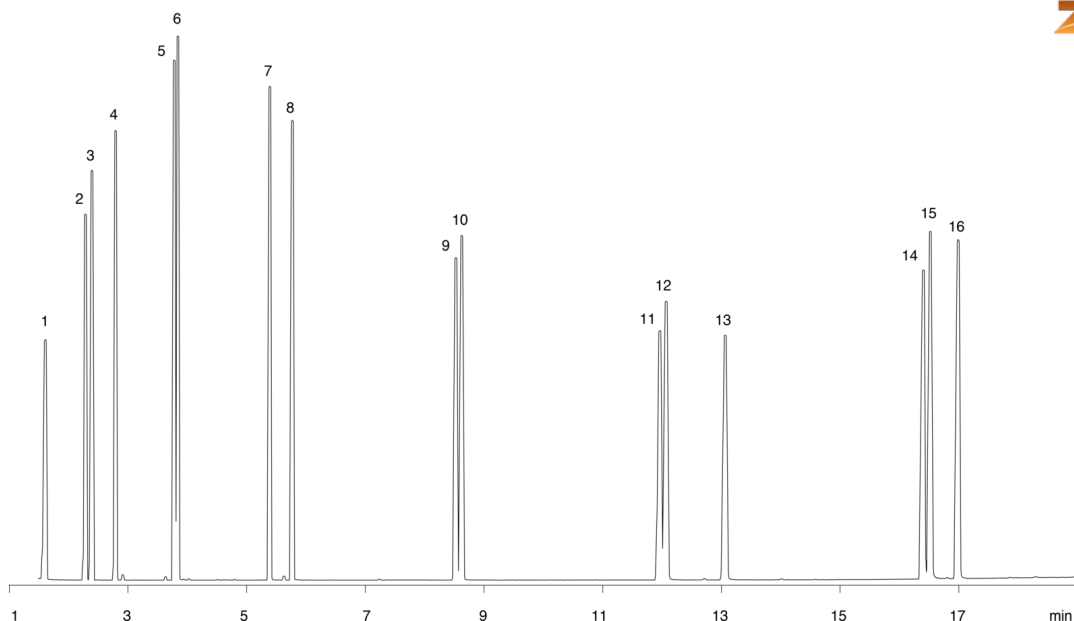
PAHs on ZB5MS 30x0.25x0.25 - 19 min

Column: Zebtron™ ZB-5MS, GC Cap. Column 30 m x 0.25 mm x 0.25 µm, Ea
Phase: 5% Phenyl-Arylene 95% Dimethylpolysiloxane
Dimensions: 30 meters x 0.25 mm x 0.25 µm
Order No: 7HG-G010-11
Oven Profile: 170°C to 240°C at 15°C/min to 275°C at 4/min to 320°C at 10°C/min for 5 min
Carrier Gas: Constant Flow Helium, 1.4 mL/min
Injection: split 15:1 0 µL @ 260°C
Detection: Mass Selective (MSD) (240°C)

14960



Products used in this application:



PAHs on ZB5MS 30x0.25x0.25 - 19 min

ANALYTES:

- 1 Naphthalene
- 2 Acenaphthylene
- 3 Acenaphthene
- 4 Fluorene
- 5 Phenanthrene
- 6 Anthracene
- 7 Fluoranthene
- 8 Pyrene
- 9 Benzo[a]anthracene
- 10 Chrysene
- 11 Benzo[b]fluroanthene
- 12 Benzo[k]fluroanthene
- 13 Benzo[a]pyrene
- 14 Indeno[1,2,3-cd]pyrene
- 15 Dibenz[a,h]anthracene
- 16 Benzo[g,h,i]perylene

