

HPLC Application

ID No.: 14966

Saccharides using Rezex RAM

Column: N/A

Dimensions: N/A

Order No: N/A

Elution Type: N/A

Eluent A: Water

Gradient

Step No.	Time (min)	Pct A
----------	------------	-------

Profile:	1	0	100
-----------------	----------	---	-----

Flow Rate: 0.6 mL/min

Col. Temp.: 75 °C

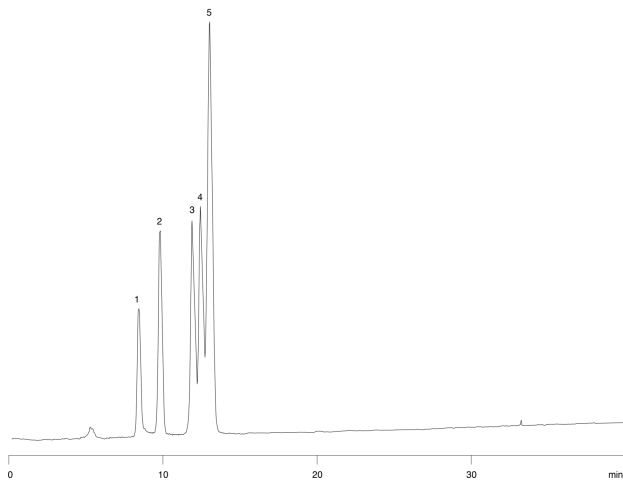
Detection: Evaporative Light Scattering @ nm (ambient)

Analyst Note: SecurityGuard[™] Guard Cartridge System extends column lifetime.

- SecurityGuard Cartridges, Carbo-Ag 4 x 3.0mm, 10/Pk Part No.: AJ0-4491

- Holder Part No.: KJ0-4282

14966



ANALYTES:

1 Melezitose

2 Mannose

3 Maltose

4 Fructose

5 Glucose

