

HPLC Application

ID No.: 14968

Sugar alcohols using Rezex RPM

Column: Rezex[™] RPM-Monosaccharide Pb+2 (8%), LC Column 300 x 7.8 mm, Ea

Dimensions: 300 x 7.8 mm ID

Order No: 00H-0135-K0

Elution Type: Isocratic

Eluent A: Water

Gradient	Step No.	Time (min)	Pct A
Profile:	1	0	100

Flow Rate: 0.6 mL/min

Col. Temp.: 75 °C

Detection: Evaporative Light Scattering @ nm (ambient)

Analyst Note: SecurityGuard[™] Guard Cartridge System extends column lifetime.

- SecurityGuard Cartridges, Carbo-Pb 4 x 3.0mm, 10/Pk Part No.: AJ0-4492

- Holder Part No.: KJ0-4282

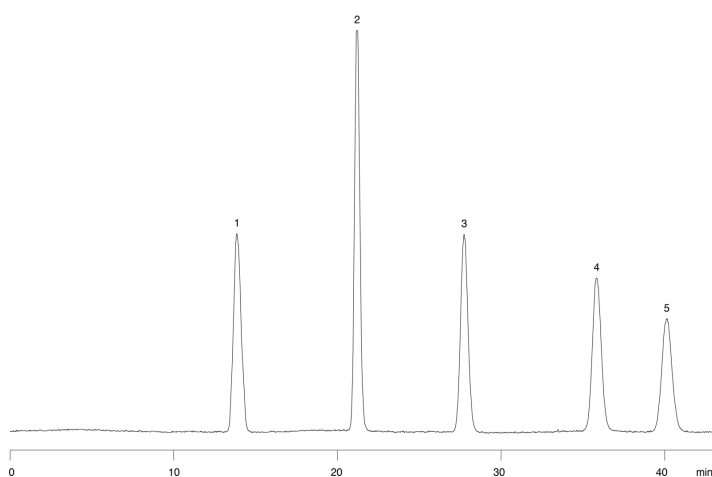
14968

REZEX[™]
HPLC COLUMNS for Carbohydrates, Oligosaccharides, and Organic Acid Analysis



Products used in this application:

REZEX[™]



ANALYTES:

- 1** Glucose
Retention Time: 13.9 min
- 2** Erythritol
Retention Time: 21.2 min
- 3** Mannitol
Retention Time: 27.8 min
- 4** Xylitol
Retention Time: 35.8 min
- 5** Sorbitol
Retention Time: 40.2 min

