

HPLC Application

ID No.: 15016

Tricyclic Antidepressants at pH 11 in Isocratic RP HPLC

Column: Gemini[®] 5 μ m C18 110 Å, LC Column 150 x 4.6 mm, Ea

Dimensions: 150 x 4.6 mm ID

Order No: 00F-4435-E0

Elution Type: Isocratic

Eluent A: 20mM TEA, pH11.0

Eluent B: ACN

Eluent C: MeOH

Gradient Profile:	Step No.	Time (min)	Pct A	Pct B	Pct C
	1	0	30	25	45

Flow Rate: 1.5 mL/min

Col. Temp.: ambient

Detection: UV-Vis Abs.-Variable Wave.(UV) @ 254nm nm (ambient)

Analyst Note: SecurityGuard[™] Guard Cartridge System extends column lifetime.

- SecurityGuard Cartridges, Gemini C18 4 x 3.0mm, 10/Pk Part No.: AJ0-7597

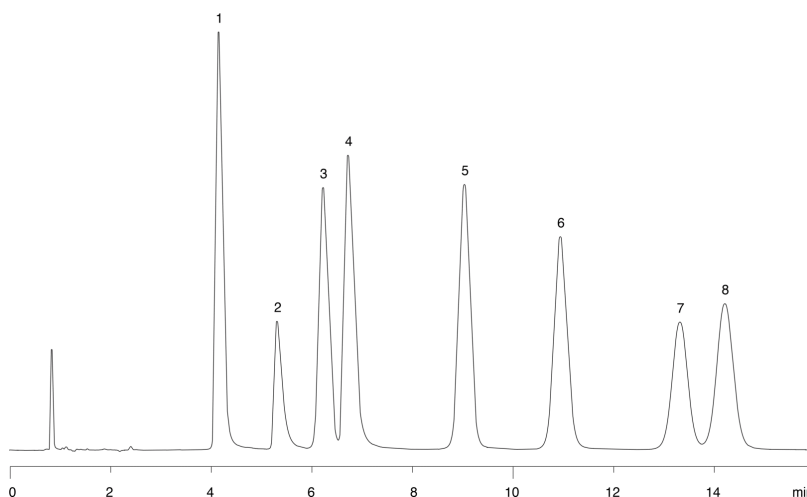
- Holder Part No.: KJ0-4282



Products used in this application:



15016



ANALYTES:

- 1 Nordoxepine
- 2 Protriptyline
- 3 Doxepine
- 4 Nortriptyline
- 5 Imipramine
- 6 Amitriptyline
- 7 Clomipramine
- 8 Trimipramine

