

# HPLC Application

ID No.: 15017

## Tricyclic Antidepressants at pH 11 in Gradient RP HPLC

**Column:** Gemini<sup>®</sup> 5  $\mu$ m C18 110 Å, LC Column 150 x 4.6 mm, Ea

**Dimensions:** 150 x 4.6 mm ID

**Order No:** 00F-4435-E0

**Elution Type:** Gradient

**Eluent A:** 20mM TEA, pH 11.0

**Eluent B:** ACN

**Eluent C:** MeOH

Gradient Profile:	Step No.	Time (min)	Pct A	Pct B	Pct C
	1	0	35	25	40
	2	15	20	25	55

**Flow Rate:** 1.5 mL/min

**Col. Temp.:** ambient

**Detection:** UV-Vis Abs.-Variable Wave.(UV) @ 254 nm (ambient)

**Analyst Note:** SecurityGuard<sup>™</sup> Guard Cartridge System extends column lifetime.

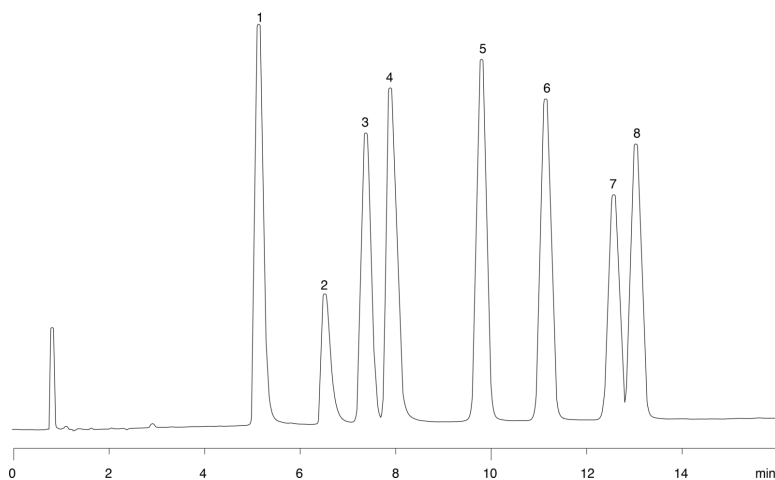
- SecurityGuard Cartridges, Gemini C18 4 x 3.0mm, 10/Pk Part No.: AJ0-7597

- Holder Part No.: KJ0-4282

15017



Products used in this application:



### ANALYTES:

- 1 Nordoxepine
- 2 Protriptyline
- 3 Doxepine
- 4 Nortriptyline
- 5 Imipramine
- 6 Amitriptyline
- 7 Clomipramine
- 8 Trimipramine

