

Basic Analytes at pH 11 in isocratic RP HPLC

Column: Gemini® 5 µm C18 110 Å, LC Column 150 x 4.6 mm, Ea

Dimensions: 150 x 4.6 mm ID

Order No: 00F-4435-E0

Elution Type: Isocratic

Eluent A: 20mM TEA, pH11

Eluent B: ACN

Gradient Profile:	Step No.	Time (min)	Pct A	Pct B
	1	0	55	45

Flow Rate: 1.5 mL/min

Col. Temp.: ambient

Detection: UV-Vis Abs.-Variable Wave.(UV) @ 230 nm (ambient)

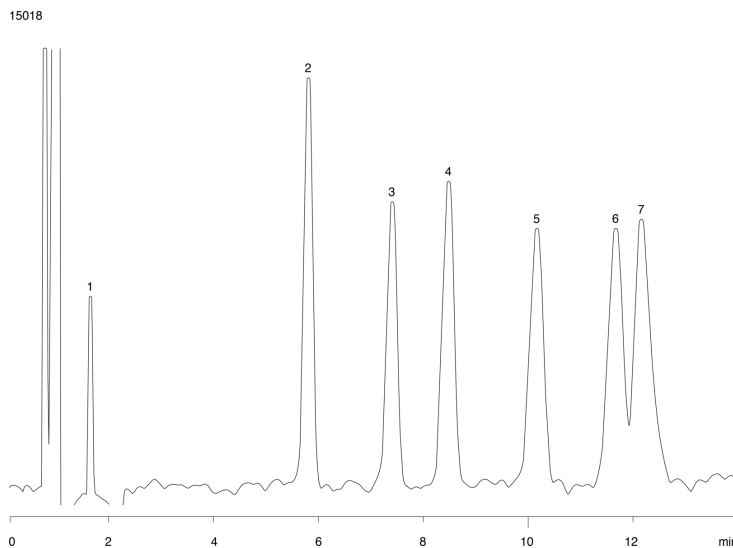
Analyst Note: SecurityGuard™ Guard Cartridge System extends column lifetime.

- SecurityGuard Cartridges, Gemini C18 4 x 3.0mm, 10/Pk Part No.: AJ0-7597

- Holder Part No.: KJ0-4282



Products used in this application:



ANALYTES:

- 1 Scopolamine
- 2 Chlorpheniramine
- 3 Lidocaine
- 4 Tetracaine
- 5 Triprolidine
- 6 Protriptyline
- 7 Diphenhydramine

