

# GC Application

ID No.: 15419

## Solvent Mix 1 ZB5MS 30x0.25x0.5

**Column:** Zebtron<sup>™</sup> ZB-5MS, GC Cap. Column 30 m x 0.25 mm x 0.50 µm, Ea

**Phase:** 5% Phenyl-Arylene 95% Dimethylpolysiloxane

**Dimensions:** 30 meters x 0.25 mm x 0.5 µm

**Order No:** 7HG-G010-17

**Oven Profile:** 40°C for 2 min to 70°C at 4°C/min to 280°C at 25°C/min

**Carrier Gas:** Constant Flow Helium, 0.9 mL/min

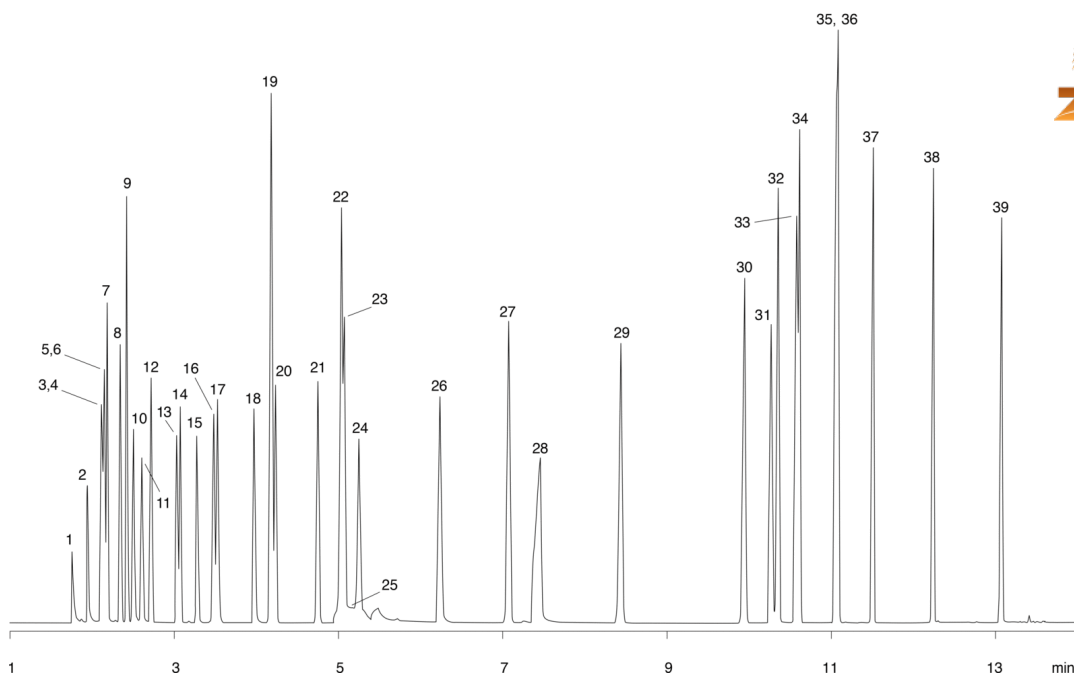
**Injection:** split 100:1 0.2 µL @ 200°C

**Detection:** Mass Selective (MSD) (240°C)

15419



Products used in this application:



## Solvent Mix 1 ZB5MS 30x0.25x0.5

### ANALYTES:

- 1 Methanol
- 2 Ethanol
- 3 Acetonitrile
- 4 Acetone
- 5 Pentane
- 6 Isopropanol
- 7 Ethyl ether
- 8 tert-Butanol
- 9 Methylene chloride
- 10 Allyl alcohol
- 11 n-Propanol
- 12 Methyl tert-butyl ether
- 13 2-Butanone
- 14 Hexane
- 15 Ethyl acetate
- 16 Chloroform
- 17 Tetrahydrofuran
- 18 1,2-Dimethoxy ethane
- 19 Benzene
- 20 Cyclohexane
- 21 isooctane
- 22 Heptane
- 23 Trichloroethylene
- 24 1,4-Dioxane
- 25 Ethylene glycol
- 26 Pyridine
- 27 Toluene
- 28 N,N-Dimethylformamide
- 29 Tetrachloroethylene
- 30 Chlorobenzene
- 31 3-Methylpyridine
- 32 Ethylbenzene
- 33 m-Xylene
- 34 p-Xylene
- 35 Styrene
- 36 o-Xylene
- 37 Anisole
- 38 Benzaldehyde
- 39 N-Methylpyrrolidinone

