

GC Application

ID No.: 15420

Multiple Solvents Mix 2 on ZB-5MS

Column: Zebtron™ ZB-5MS, GC Cap. Column 30 m x 0.25 mm x 0.50 μm, Ea

Phase: 5% Phenyl-Arylene 95% Dimethylpolysiloxane

Dimensions: 30 meters x 0.25 mm x 0.5 μm

Order No: 7HG-G010-17

Oven Profile: 40°C for 2 to 70°C at 4°C/min to 280°C at 25°C/min

Carrier Gas: Constant Flow Helium, 0.9 mL/min

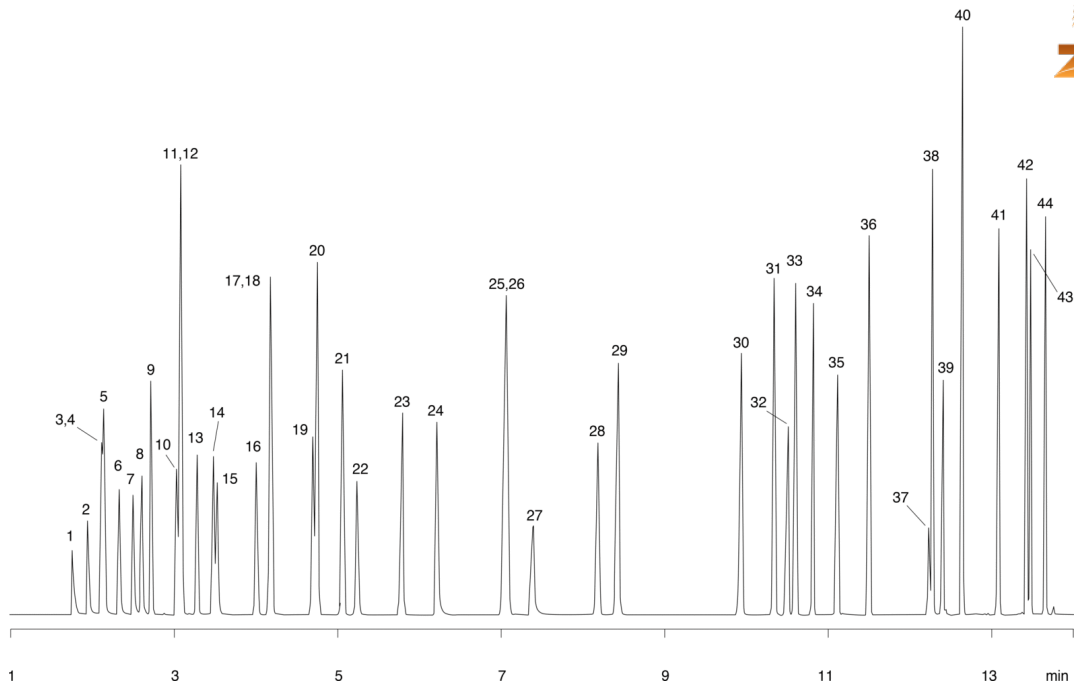
Injection: split 100:1 0.2 μL @ 200°C

Detection: Mass Selective (MSD) (240°C)

15420



Products used in this application:



Multiple Solvents Mix 2 on ZB-5MS

ANALYTES:

- | | | | |
|----|-------------------------|----|----------------|
| 1 | Methanol | 41 | Benzyl alcohol |
| 2 | Ethanol | 42 | Acetophenone |
| 3 | Acetonitrile | 43 | o-Toluidine |
| 4 | Acetone | 44 | Nitrobenzene |
| 5 | Isopropanol | | |
| 6 | Acrylonitrile | | |
| 7 | Allyl alcohol | | |
| 8 | Propanol | | |
| 9 | Methyl tert-butyl ether | | |
| 10 | 2-Butanone | | |
| 11 | Hexane | | |
| 12 | Isopropyl ether | | |
| 13 | Ethyl acetate | | |
| 14 | Chloroform | | |
| 15 | Tetrahydrofuran | | |
| 16 | 1,2-Dichloroethane | | |
| 17 | Benzene | | |
| 18 | Butanol | | |
| 19 | Propyl ether | | |
| 20 | 2,2,4-Trimethylpentane | | |
| 21 | Trichloroethylene | | |
| 22 | 1,4-Dioxane | | |
| 23 | Methyl cyclohexane | | |
| 24 | Pyridine | | |
| 25 | Pentanol | | |
| 26 | Toluene | | |
| 27 | Dimethyl formamide | | |
| 28 | Octane | | |
| 29 | Tetrachloroethylene | | |
| 30 | Chlorobenzene | | |
| 31 | Ethylbenzene | | |
| 32 | Hexanol | | |
| 33 | p-Xylene | | |
| 34 | n-Butyl ether | | |
| 35 | Cyclohexanone | | |
| 36 | Anisole | | |
| 37 | Benzaldehyde | | |
| 38 | Heptanol | | |
| 39 | Aniline | | |
| 40 | 1,2,4-Trimethyl benzene | | |

