

## Phthalate Esters - EPA Method 606 on ZB-5MS

**Column:** Zebtron™ ZB-5MS, GC Cap. Column 30 m x 0.32 mm x 0.25 µm, Ea

**Phase:** 5% Phenyl-Arylene 95% Dimethylpolysiloxane

**Dimensions:** 30 meters x 0.32 mm x 0.25 µm

**Order No:** 7HM-G010-11

**Oven Profile:** 75°C to 300 at 15°C/min for 5 min

**Carrier Gas:** Constant Flow Helium, 2.6 mL/min

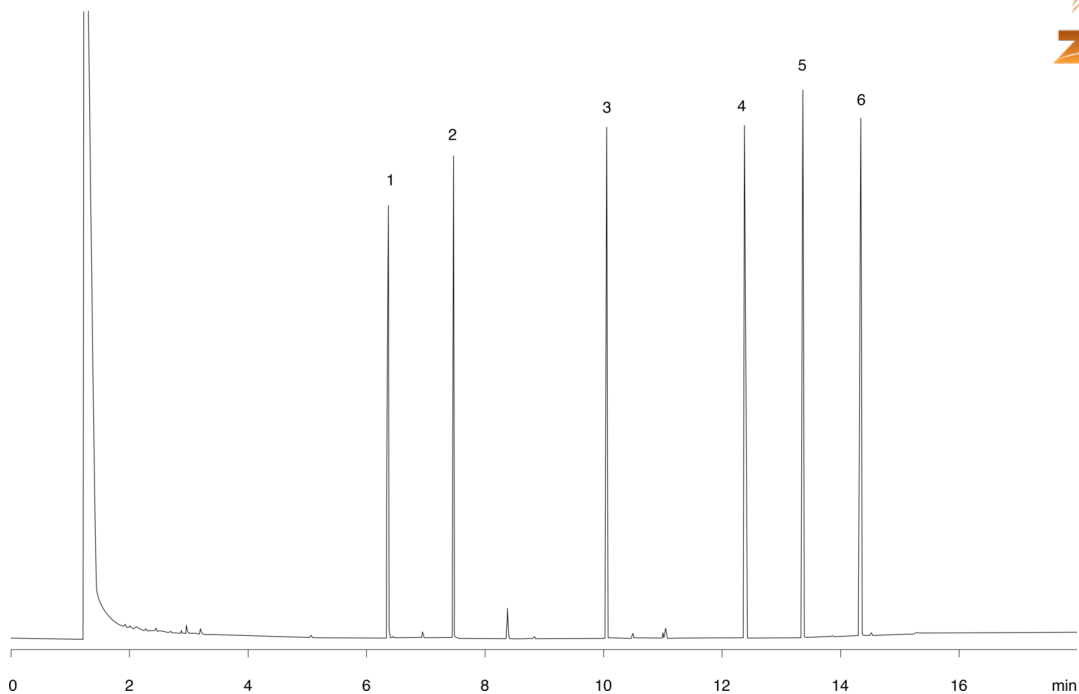
**Injection:** Split 20:1 1 µL @ 300°C

**Detection:** Flame Ionization (FID) (300°C)

15425



Products used in this application:



### ANALYTES:

- 1 Dimethyl phthalate
- 2 Diethyl phthalate
- 3 Di-n-butyl Phthalate
- 4 Butyl benzyl phthalate
- 5 bis(2-Ethylhexyl)phthalate
- 6 Di-n-octyl phthalate

