

GC Application

ID No.: 15432

Aliphatic Amines on ZB-5MS

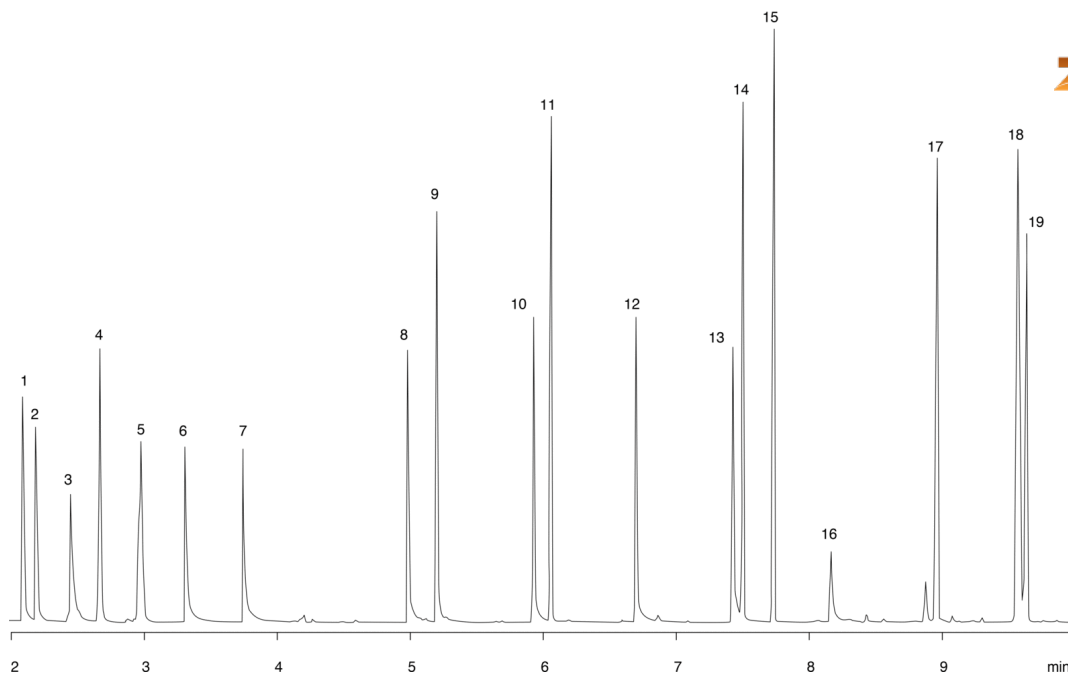
Column: Zebron[™] ZB-5MS, GC Cap. Column 30 m x 0.25 mm x 0.25 μ m, Ea
Phase: 5% Phenyl-Arylene 95% Dimethylpolysiloxane
Dimensions: 30 meters x 0.25 mm x 0.25 μ m
Order No: 7HG-G010-11
Oven Profile: 60°C for 1 min to 130°C at 12°C/min to 220°C at 30°C/min for 4 min

Carrier Gas: Constant Flow Helium, 1 mL/min
Injection: split 15:1 1 μ L @ 220°C
Detection: Mass Selective (MSD) (240°C)

15432



Products used in this application:



Aliphatic Amines on ZB-5MS

ANALYTES:

- 1 sec-Butylamine
- 2 Isobutylamine
- 3 n-Butylamine
- 4 Diisopropylamine
- 5 Triethylamine
- 6 Isopentylamine
- 7 Pentylamine
- 8 Hexylamine
- 9 Cyclohexylamine
- 10 Heptylamine
- 11 Dibutylamine
- 12 Octylamine
- 13 Nonylamine
- 14 Dipentylamine
- 15 Tributylamine
- 16 Decylamine
- 17 Dihexylamine
- 18 Dicyclohexylamine
- 19 contaminant

