

HPLC Application

ID No.: 15467

SFC - Drugs on Luna 10u Si(2)

Column: Luna® 10 µm Silica (2) 100 Å, LC Column 250 x 4.6 mm, Ea

Dimensions: 250 x 4.6 mm ID

Order No: 00G-4091-E0

Elution Type: Isocratic

Eluent A: Supercritical Carbon Dioxide

Eluent B: Methanol

Gradient Profile:	Step No.	Time (min)	Pct A	Pct B
	1	0	75	25

Flow Rate: 4 mL/min

Col. Temp.: 40 °C

Detection: UV-Vis Abs.-Variable Wave.(UV) @ 265 nm (40 °C)

Analyst Note: SecurityGuard™ Guard Cartridge System extends column lifetime.

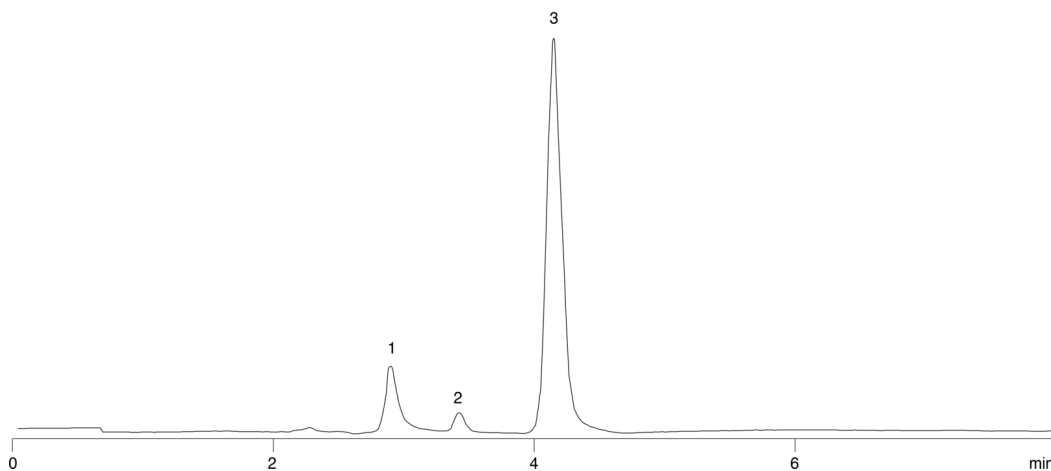
- SecurityGuard Cartridges, Silica 4 x 3.0mm, 10/Pk Part No.: AJ0-4348

- Holder Part No.: KJ0-4282

15467



Products used in this application:



ANALYTES:

- 1 Acetaminophen
- 2 Benzoic acid
- 3 Procaine

