

# HPLC Application

ID No.: 15474

## Phenols on Onyx C18 - Flow Gradient

**Column:** Onyx<sup>™</sup> Monolithic C18, LC Column 100 x 4.6 mm, Ea

**Dimensions:** 100 x 4.6 mm ID

**Order No:** CH0-7643

**Elution Type:** Gradient

**Eluent A:** 0.1% H3PO4 in Water

**Eluent B:** Acetonitrile

<b>Gradient Profile:</b>	<b>Step No.</b>	<b>Time (min)</b>	<b>Pct A</b>	<b>Pct B</b>
	<b>1</b>	0	65	35
	<b>2</b>	1.8	54	46
	<b>3</b>	2.2	20	80
	<b>4</b>	3	20	80

**Flow Rate:** 3 mL/min

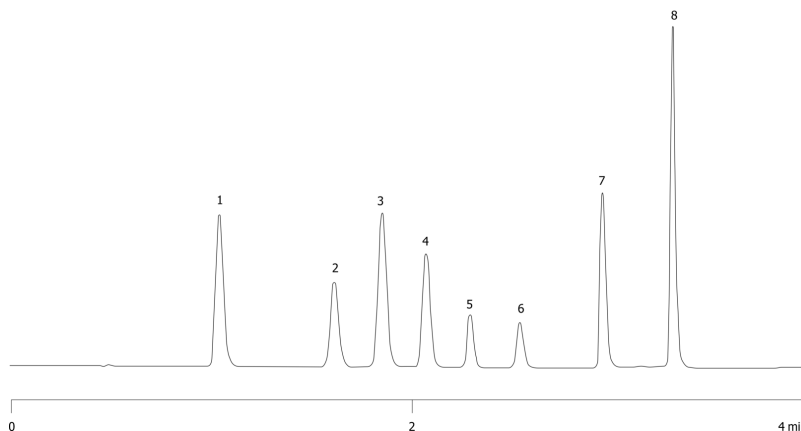
**Col. Temp.:** ambient

**Detection:** UV-Vis Abs.-Variable Wave.(UV) @ 250 nm (25 °C)

15474



Products used in this application:



### ANALYTES:

- 1** Phenol
- 2** 2-Chlorophenol
- 3** 2-Nitrophenol
- 4** 2,4-Dinitrophenol
- 5** 4-Chloro-3-methylphenol
- 6** 2,4-Dinitro-6-methylphenol
- 7** 2,4,6-Trichlorophenol
- 8** Pentachlorophenol

