

HPLC Application

ID No.: 15481

Peptides (Angiotensin) on Onyx C8

Column: Onyx[™] Monolithic C8, LC Column 100 x 4.6 mm, Ea

Dimensions: 100 x 4.6 mm ID

Order No: CH0-7647

Elution Type: Gradient

Eluent A: 0.1% TFA in Water

Eluent B: 0.1% TFA in 90/10 Acetonitrile:Water

Gradient Profile:	Step No.	Time (min)	Pct A	Pct B
	1	0	55	45
	2	1	10	90
	3	3	10	90

Flow Rate: 2 mL/min

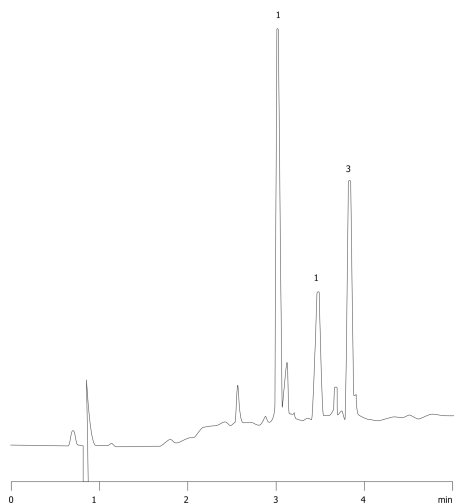
Col. Temp.: ambient

Detection: UV-Vis Abs.-Variable Wave.(UV) @ 214 nm (ambient)

15481



Products used in this application:



ANALYTES:

- 1** (Sar1, Ala8) Angiotensin II
- 2** (Sar1, Ile8) Angiotensin II
- 3** Angiotensin

