

HPLC Application

ID No.: 15483

Triptylines on Onyx C8

Column: Onyx[™] Monolithic C8, LC Column 100 x 4.6 mm, Ea

Dimensions: 100 x 4.6 mm ID

Order No: CH0-7647

Elution Type: Isocratic

Eluent A: 20mM Phosphate buffer, pH 7.6

Eluent B: Methanol

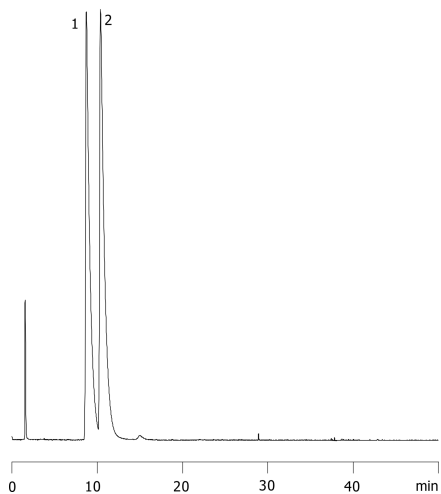
| Gradient Profile: | Step No. | Time (min) | Pct A | Pct B |
|-------------------|----------|------------|-------|-------|
| | 1 | 0 | 30 | 70 |

Flow Rate: 1 mL/min

Col. Temp.: ambient

Detection: UV-Vis Abs.-Variable Wave.(UV) @ 254 nm (ambient)

15483



ANALYTES:

- 1 Imipramine
- 2 Amitriptyline



Products used in this application:

