

# HPLC Application

ID No.: 15487

## Beta Blockers on Onyx C18

**Column:** Onyx<sup>™</sup> Monolithic C18, LC Column 100 x 4.6 mm, Ea

**Dimensions:** 100 x 4.6 mm ID

**Order No:** CH0-7643

**Elution Type:** Isocratic

**Eluent A:** 20mM Sodium Phosphate, pH 3.0

**Eluent B:** Methanol

| Gradient Profile: | Step No. | Time (min) | Pct A | Pct B |
|-------------------|----------|------------|-------|-------|
|                   | 1        | 0          | 70    | 30    |

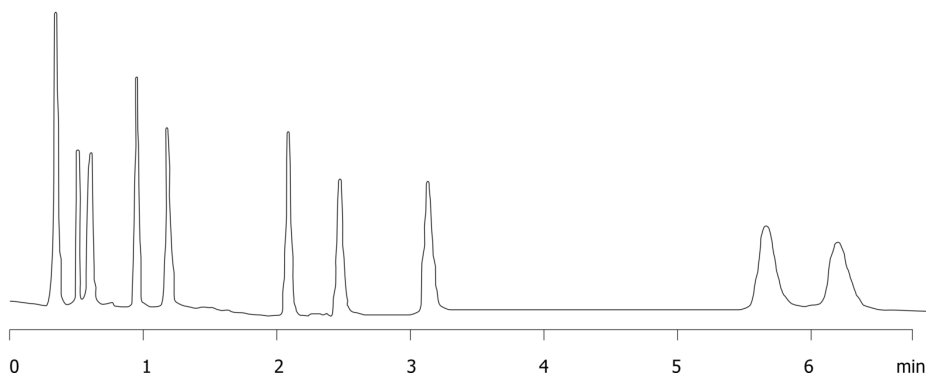
**Flow Rate:** 2 mL/min

**Col. Temp.:** ambient

**Detection:** UV-Vis Abs.-Variable Wave.(UV) @ 254 nm (ambient)  
15487



Products used in this application:



## Beta Blockers on Onyx C18

### ANALYTES:

- 1 Fumaric acid
- 2 Pindolol
- 3 Nadolol
- 4 Pafenolol
- 5 Metoprolol
- 6 Celiprolol
- 7 Carazolol
- 8 Bisoprolol
- 9 Alprenolol
- 10 Propranolol

