

HPLC Application

ID No.: 15501

Mannitol and Sorbitol on Rezex RPM 100x7.8mm (USP XXVII)

Column: Rezex[™] RPM-Monosaccharide Pb+2 (8%), LC Column 100 x 7.8 mm, Ea

Dimensions: 100 x 7.8 mm ID

Order No: 00D-0135-K0

Elution Type: Isocratic

Eluent A: Water

Gradient	Step No.	Time (min)	Pct A
Profile:	1	0	100

Flow Rate: 0.6 mL/min

Col. Temp.: 80 °C

Detection: Evaporative Light Scattering @ (ambient)

Detector Info: Polymer Labs ELS-2100

Analyst Note: SecurityGuard[™] Guard Cartridge System extends column lifetime.

- SecurityGuard Cartridges, Carbo-Pb 4 x 3.0mm, 10/Pk Part No.: AJ0-4492

- Holder Part No.: KJ0-4282

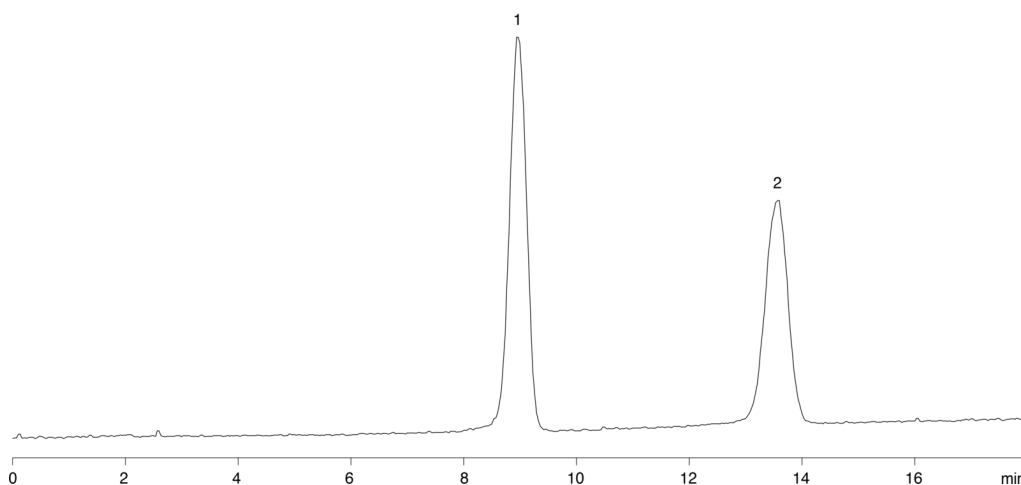
15501

REZEX[™]
HPLC COLUMNS for Carbohydrates, Oligosaccharides, and Organic Acid Analysis



Products used in this application:

REZEX[™]



ANALYTES:

- 1 Mannitol
- 2 Sorbitol

