

# HPLC Application

ID No.: 15502

## IgG Dog Reduced Jupiter C4 300

**Column:** Jupiter® 5 µm C4 300 Å, LC Column 250 x 4.6 mm, Ea

**Dimensions:** 250 x 4.6 mm ID

**Order No:** 00G-4167-E0

**Elution Type:** Gradient

**Eluent A:** 0.1% TFA in Water/Acetonitrile (95:5)

**Eluent B:** 0.085% TFA in Water/Acetonitrile (5:95)

Gradient Profile:	Step No.	Time (min)	Pct A	Pct B
	1	0	80	20
	2	20	10	90

**Flow Rate:** 1 mL/min

**Col. Temp.:** ambient

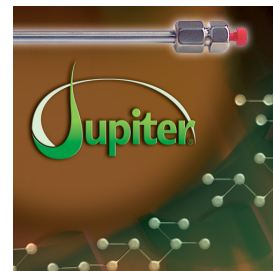
**Detection:** UV-Vis Abs.-Variable Wave.(UV) @ 210 nm (ambient)

**Analyst Note:** SecurityGuard™ Guard Cartridge System extends column lifetime.

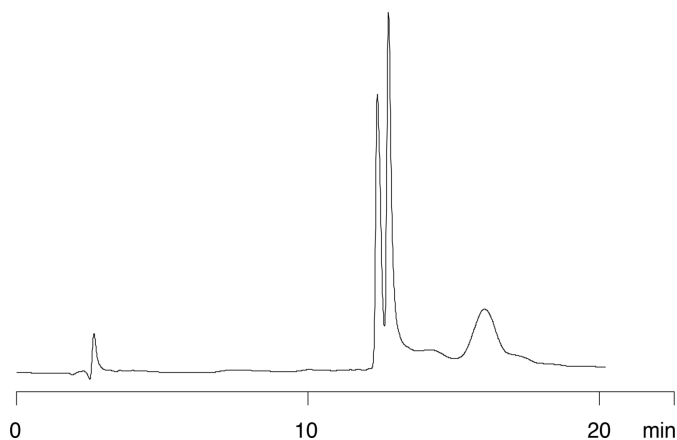
- SecurityGuard Cartridges, Widedpore C4 4 x 3.0mm, 10/Pk Part No.: AJ0-4330

- Holder Part No.: KJ0-4282

15502



Products used in this application:



### ANALYTES:

1 IgG

