

HPLC Application

ID No.: 15508

Geometric Isomers on Onyx C18 @ 2mL/min

Column: Onyx[™] Monolithic C18, LC Column 100 x 4.6 mm, Ea

Dimensions: 100 x 4.6 mm ID

Order No: CH0-7643

Elution Type: Isocratic

Eluent A: 0.1% TFA in Water

Eluent B: ACN

Gradient Profile:	Step No.	Time (min)	Pct A	Pct B
	1	0	95	5

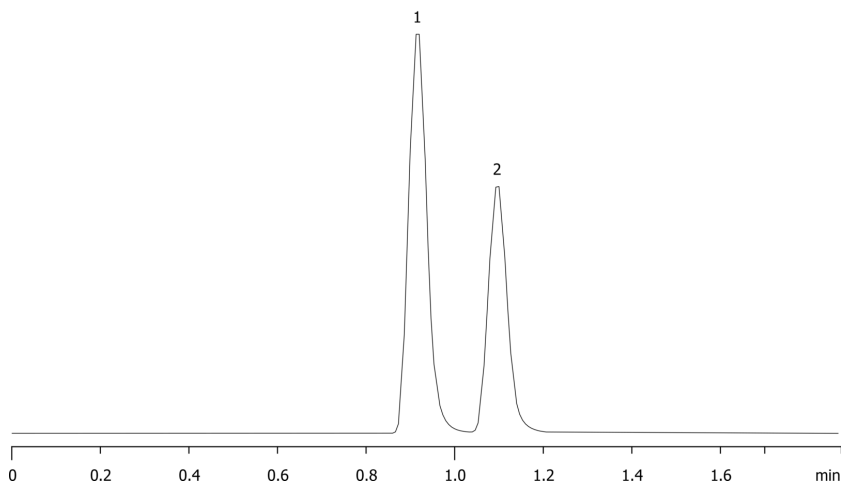
Flow Rate: 2 mL/min

Col. Temp.: ambient

Detection: UV-Vis Abs.-Variable Wave.(UV) @ 220 nm (ambient)
15508



Products used in this application:



ANALYTES:

- 1 Maleic acid
- 2 Fumaric acid

