

## Energy Drink Components with flow gradient on Onyx C18

**Column:** Onyx™ Monolithic C18, LC Column 50 x 4.6 mm, Ea

**Dimensions:** 50 x 4.6 mm ID

**Order No:** CH0-7644

**Elution Type:** Gradient

**Eluent A:** 10mM Potassium phosphate, pH 5.0

**Eluent B:** Acetonitrile

Gradient Profile:	Step No.	Time (min)	Pct A	Pct B
	1	0	97	3
	2	2	97	3

**Flow Rate:** 2 mL/min

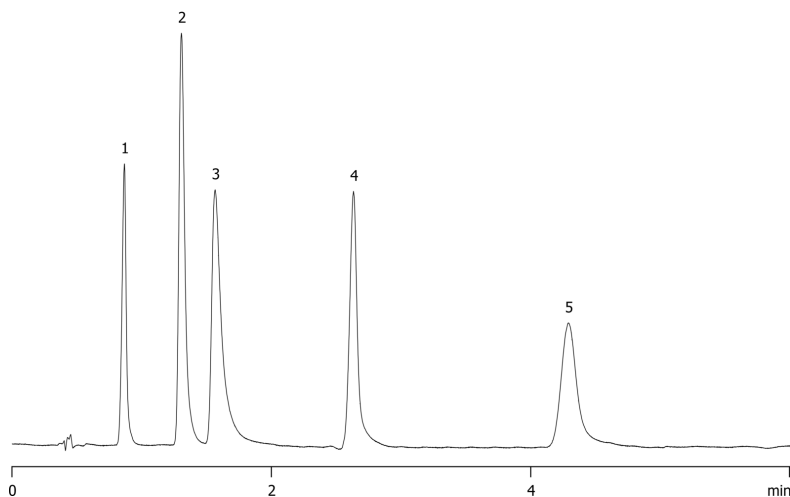
**Col. Temp.:** ambient

**Detection:** UV-Vis Abs.-Variable Wave.(UV) @ 220 nm (ambient)

15515



Products used in this application:



### ANALYTES:

- 1 p-Hydroxybenzoic acid  
Retention Time: 0.865 min
- 2 Saccharin  
Retention Time: 1.306 min
- 3 Salicylic acid  
Retention Time: 1.566 min
- 4 Sorbic acid  
Retention Time: 2.633 min
- 5 p-Toluic acid  
Retention Time: 4.29 min

