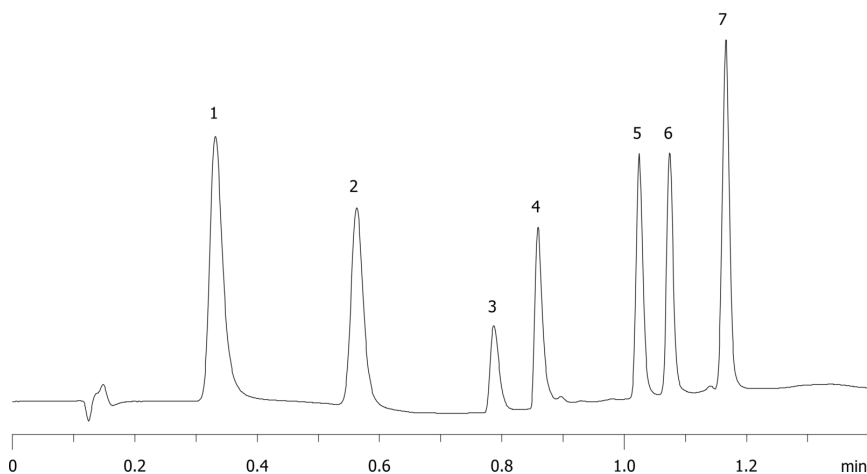


Pharmaceutical Compounds on Synergi Fusion-RP 2.5µm 20 x 2.0mm MercuryMS Cartridge

Column: N/A
Dimensions: N/A
Order No: N/A
Elution Type: N/A
Eluent A: 0.1% Formic Acid in Water
Eluent B: 0.1% Formic acid in Acetonitrile

Gradient Profile:	Step No.	Time (min)	Pct A	Pct B
	1	0	92	8
	2	1	5	95
	3	1.01	92	8
	4	2	92	8

Flow Rate: 0.6 mL/min
Col. Temp.: ambient
Detection: UV-Vis Abs.-Variable Wave.(UV) @ 254 nm (ambient)
15516



ANALYTES:

- 1 Acetaminophen**
Retention Time: 0.332 min
- 2 Caffeine**
Retention Time: 0.563 min
- 3 Propanolol**
Retention Time: 0.787 min
- 4 Imipramine**
Retention Time: 0.859 min
- 5 Prednisolone**
Retention Time: 1.024 min
- 6 Naproxen**
Retention Time: 1.074 min
- 7 Indomethacine**
Retention Time: 1.165 min

