

# HPLC Application

ID No.: 15519

## Energy Drink Components on Onyx C18 using gradual flow gradient

**Column:** Onyx<sup>™</sup> Monolithic C18, LC Column 50 x 4.6 mm, Ea

**Dimensions:** 50 x 4.6 mm ID

**Order No:** CH0-7644

**Elution Type:** Gradient

**Eluent A:** 10mM Potassium phosphate, pH 5.0

**Eluent B:** Acetonitrile

Gradient Profile:	Step No.	Time (min)	Pct A	Pct B
	1	0	97	3
	2	1	97	3
	3	4	97	3

**Flow Rate:** 1 mL/min

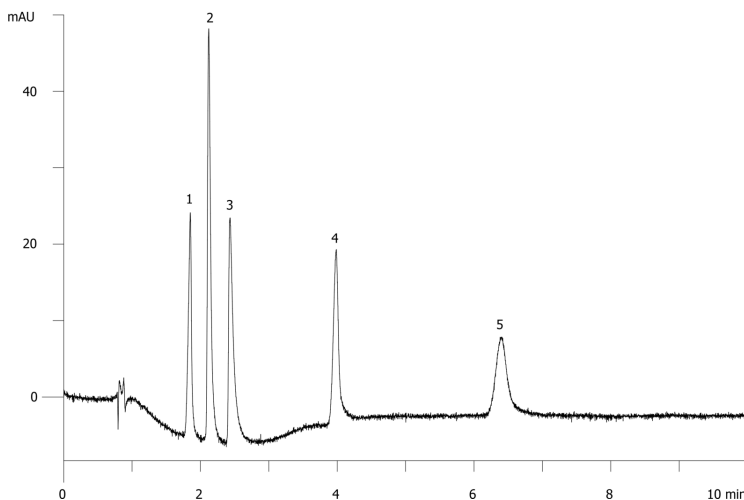
**Col. Temp.:** ambient

**Detection:** UV-Vis Abs.-Variable Wave.(UV) @ 220 nm (ambient)

15519



Products used in this application:



### ANALYTES:

- 1** p-Hydroxybenzoic acid  
Retention Time: 1.849 min
- 2** Saccharin  
Retention Time: 2.119 min
- 3** Salicylic acid  
Retention Time: 2.431 min
- 4** Sorbic acid  
Retention Time: 3.982 min
- 5** p-Toluic acid  
Retention Time: 6.395 min

