

HPLC Application

ID No.: 15521

Energy Drink Components on Onyx C18 at 2.0mL/min.

Column: Onyx™ Monolithic C18, LC Column 50 x 4.6 mm, Ea

Dimensions: 50 x 4.6 mm ID

Order No: CH0-7644

Elution Type: Isocratic

Eluent A: 10mM Potassium phosphate, pH 5.0

Eluent B: Acetonitrile

| Gradient Profile: | Step No. | Time (min) | Pct A | Pct B |
|-------------------|----------|------------|-------|-------|
| | 1 | 0 | 97 | 3 |

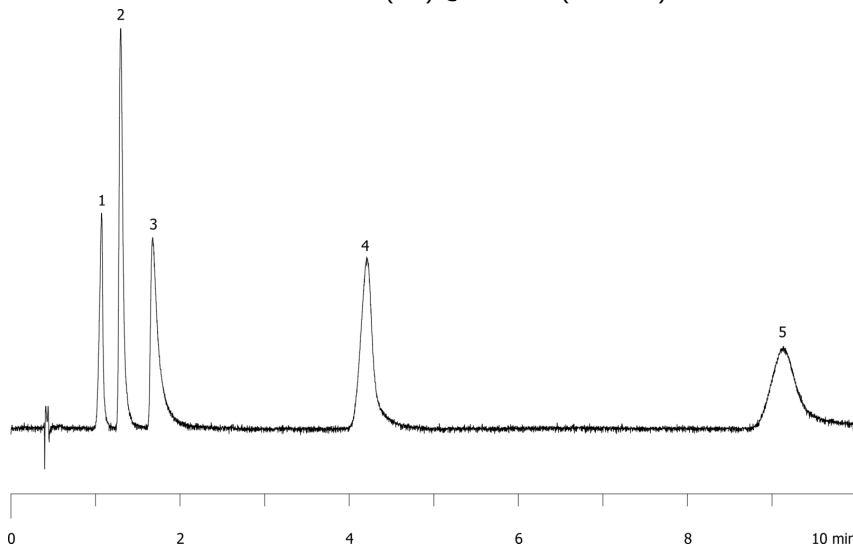
Flow Rate: 2 mL/min

Col. Temp.: ambient

Detection: UV-Vis Abs.-Variable Wave.(UV) @ 220 nm (ambient)



Products used in this application:



ANALYTES:

- 1** p-Hydroxybenzoic acid
Retention Time: 1.071 min
- 2** Saccharin
Retention Time: 1.296 min
- 3** Salicylic acid
Retention Time: 1.674 min
- 4** Sorbic acid
Retention Time: 4.211 min
- 5** p-Toluic acid
Retention Time: 9.138 min

