

HPLC Application

ID No.: 15533

Zearalone analysis using Gemini

Column: Gemini® 5 µm C18 110 Å, LC Column 150 x 3 mm, Ea

Dimensions: 150 x 3 mm ID

Order No: 00F-4435-Y0

Elution Type: Isocratic

Eluent A: 0.1% Formic acid in Water

Eluent B: Acetonitrile

Gradient Profile:	Step No.	Time (min)	Pct A	Pct B
	1	0	50	50

Flow Rate: 0.5 mL/min

Col. Temp.: ambient

Detection: Mass Spectrometer (MS) @ amu (ambient)

Analyst Note: SecurityGuard™ Guard Cartridge System extends column lifetime.

- SecurityGuard Cartridges, Gemini C18 4 x 2.0mm, 10/Pk Part No.: AJ0-7596

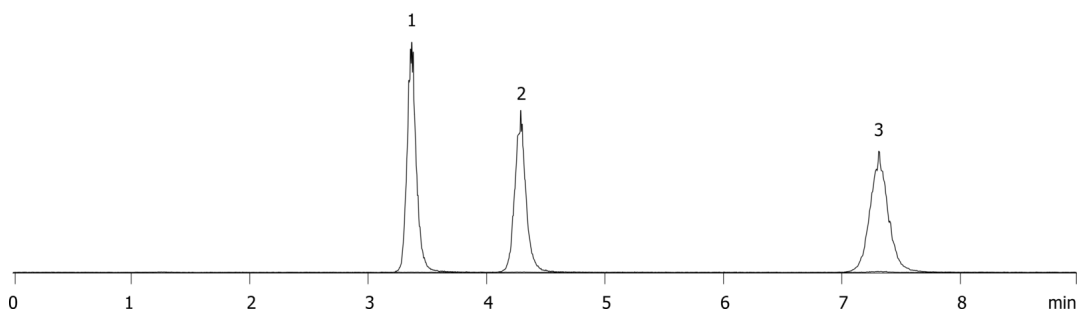
- Holder Part No.: KJ0-4282



Products used in this application:



15533



ANALYTES:

- 1 beta-Zearalenol
- 2 alpha-Zearalenol
- 3 Zearalenone

