

HPLC Application

ID No.: 15538

Patulin analysis using Synergi Max-RP

Column: Synergi[™] 4 μ m Max-RP 80 Å, LC Column 150 x 3 mm, Ea

Dimensions: 150 x 3 mm ID

Order No: 00F-4337-Y0

Elution Type: Isocratic

Eluent A: Water

Eluent B: Acetonitrile

Gradient Profile:	Step No.	Time (min)	Pct A	Pct B
	1	0	90	10

Flow Rate: 0.5 mL/min

Col. Temp.: ambient

Detection: UV-Vis Abs.-Variable Wave.(UV) @ 275 nm (ambient)

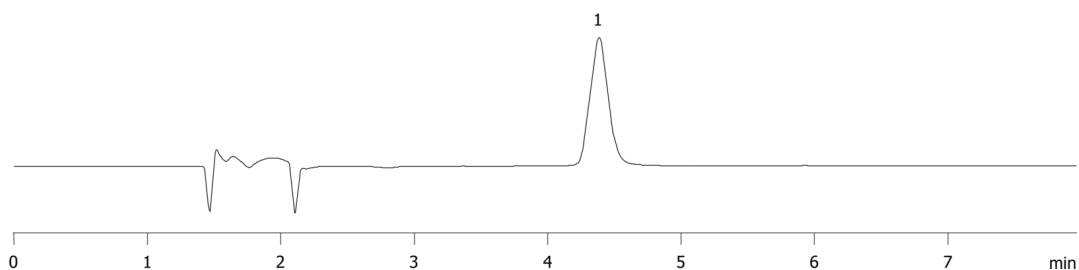
Analyst Note: SecurityGuard[™] Guard Cartridge System extends column lifetime.

- SecurityGuard Cartridges, C12 4 x 2.0mm, 10/Pk Part No.: AJ0-6073

- Holder Part No.: KJ0-4282



15538



ANALYTES:

1 Patulin

